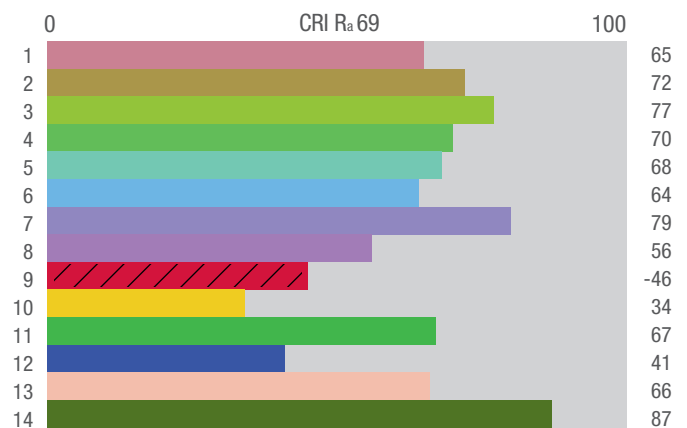
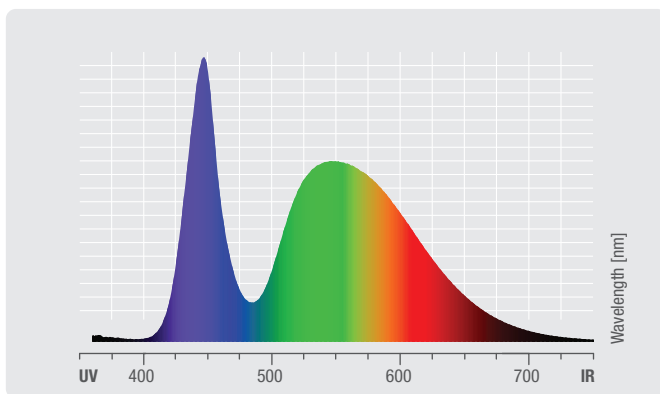
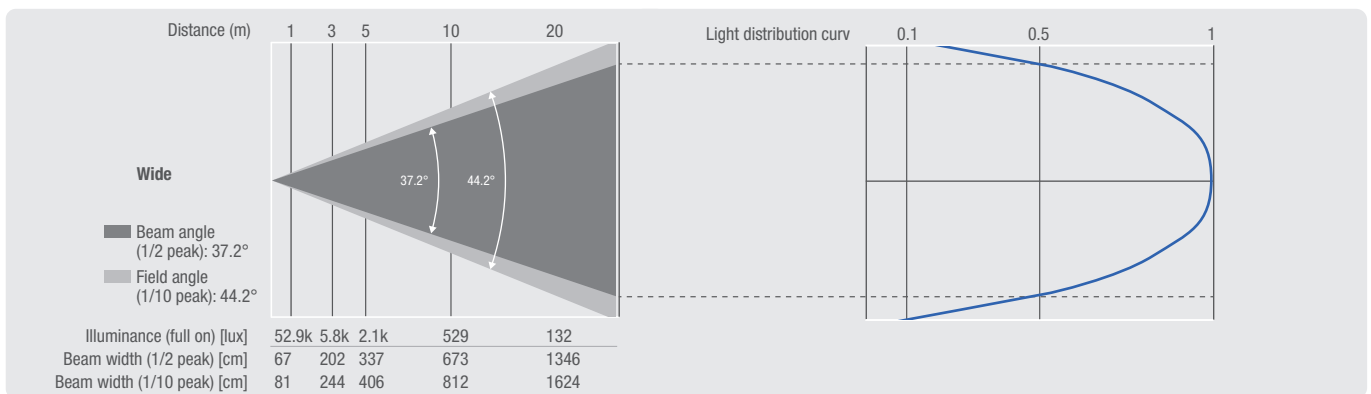
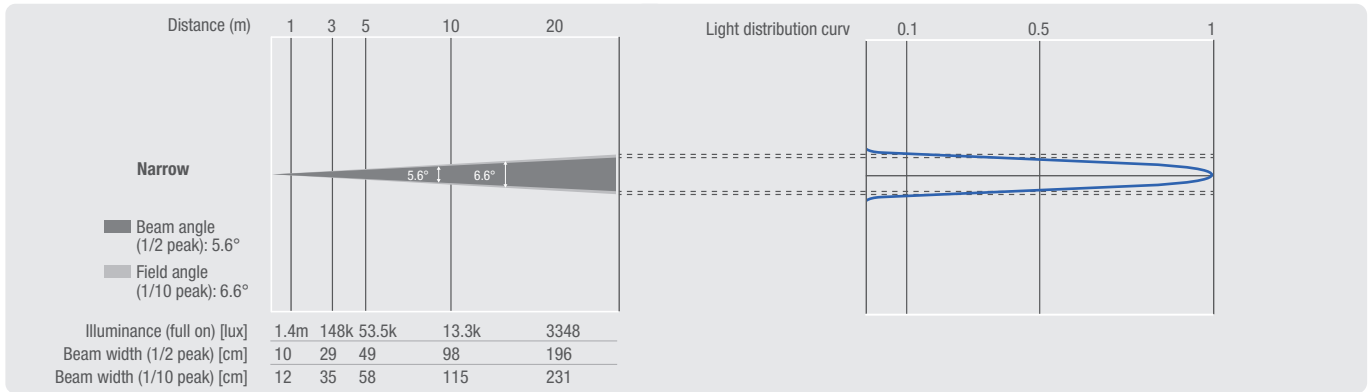


# Photometric Measurements

Photometrische Messungen | Mesures Photométriques  
 Mediciones Fotométricas

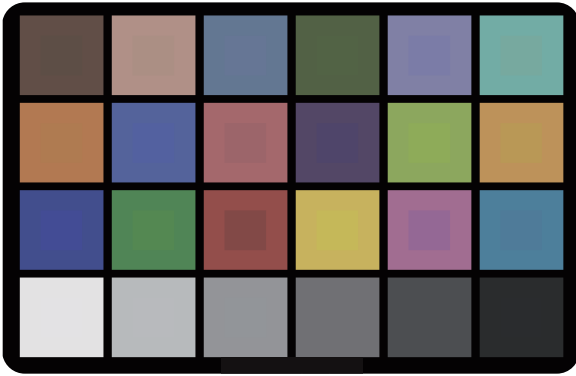
## OPUS® SP5+ (CLOSP5PLUS)

	Luminous flux	Chromaticity coordinates	CCT	R <sub>a</sub>
Full on	19568 lm	x 0.314 y 0.339	6333 K	69

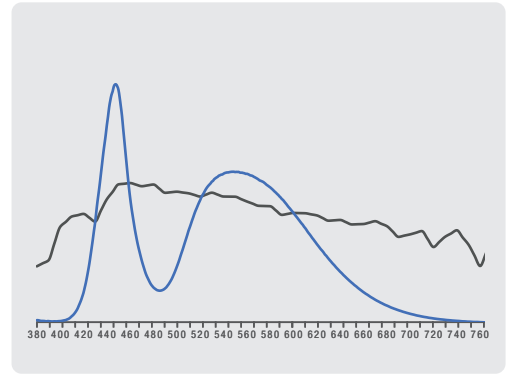


# Television Lighting Consistency Index-2012

CCT = D6325 (+0.8)  
TLCI-2012: 46 (D6325)



Sector	Lightness	Chroma	Hue
R	++++	+++	+
R/Y	0	0	----
Y	-	--	++++
Y/G	-	--	0
G	--	-	+++
G/C	0	0	++++
C	++	0	0
C/B	+++	0	----
B	+	--	--
B/M	++	--	++++
M	++++	-	++++
M/R	++++	0	++++



## TM-30-15 $R_f$ 68 $R_g$ 92

