

F2 FC PO

POLE-OPERATED FRESNEL SPOTLIGHT WITH RGBW LED



FEATURES

- ✓ Full Colour Fresnel with special RGBW LED and CRI > 90 constantly
- ✓ Easy to operate from the floor with a pole for pan, tilt and zoom
- ✓ Seamless colour temperature adjustment from 1,600 K to 6,500 K
- ✓ Adjustable green-magenta correction
- ✓ Brilliant colours and precise white tone adjustment
- ✓ Continuous zoom for beam angles from 18° to 55°
- ✓ Four selectable 16-bit dimmer curves with adjustable response
- ✓ Highly efficient cooling thanks to a heatpipe and temperature-controlled fan
- ✓ Control via DMX and RDM
- ✓ Selectable pulse width modulation frequencies up to 25 kHz
- ✓ Flicker-free and noiseless operation, ideal for TV, film, photography studios and theatre
- ✓ Includes 8-way barn door and gel filter frames

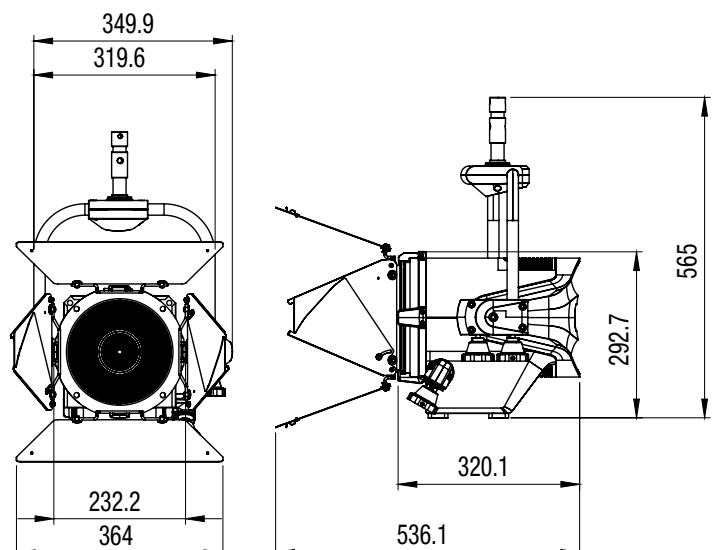
DESCRIPTION

Leaves nothing to be desired in terms of colour preferences and white shades - the Cameo F2 FC PO

A complete palette of dynamic colours and countless shades of white at maximum reproduction quality - the Cameo F2 FC PO is your perfect Fresnel spotlight for professional application in front of the camera and in

theatres. Its pole operability now also makes the Cameo F2 FC PO a great choice for anyone who prefers precise manual adjustment from the ground and is unable or unwilling to use a ladder. Its white tones can be precision-adjusted in CCT mode from 1,600 K to 6,500 K at a constant CRI of over 90, and perfectly adjusted to skin tones, camera sensors and ambient light via additional green-magenta correction. RGBW colour-blending in HSI mode facilitates rapid adjustment of colour, intensity and saturation at the light desk using only three control circuits. Using additional colour filters is a thing of the past. The high-quality 200 mm lens creates a soft-edged beam of light that can be manually and gradually adjusted to all intermediate positions from spot to flood in the 18° to 55° beam angle. At the same time, the integrated condenser lens provides evenly blended colours and colour shadow-free light dispersion, even when using the barn door.

The F2 FC PO is fully RDM-capable and features a range of DMX control modes as well as four 16-bit dimmer curves with adjustable response. Even at its lowest setting, gradual dimming meets the highest theatre demands. Six selectable pulse width modulation frequencies of 800 Hz to 25 kHz ensure flicker-free operation, even for high-speed camera settings. A heatpipe combined with a temperature-controlled fan provides highly efficient cooling and virtually noiseless operation. For convenient configuration, the spotlight's robust die-cast aluminium housing is equipped with three rotary encoders and an OLED display. The Quicklight feature provides lighting technicians with immediate control of the spotlight, without the need to navigate through the menu. 5-pin DMX connections and Power Twist mains sockets facilitate unproblematic daisy chaining. The spotlight comes with an 8-way barn door, a filter frame and a mains cable.



Features and specifications
subject to change without notice.

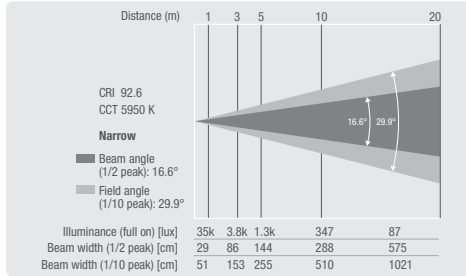
adamhall.com

F2 FC P0

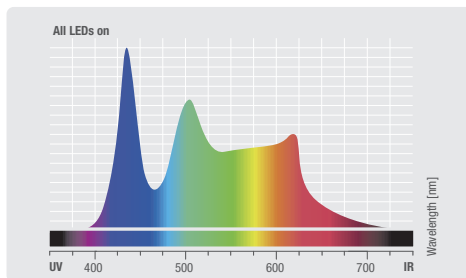
POLE-OPERATED FRESNEL SPOTLIGHT WITH RGBW LED



PHOTOMETRICAL DATA



Luminous flux	Chromaticity coordinates
All LEDs on 6857 lm	x 0.324 y 0.344
White 6822 lm	x 0.316 y 0.327
Blue 482 lm	x 0.164 y 0.041
Green 1939 lm	x 0.168 y 0.678
Red 1047 lm	x 0.685 y 0.302

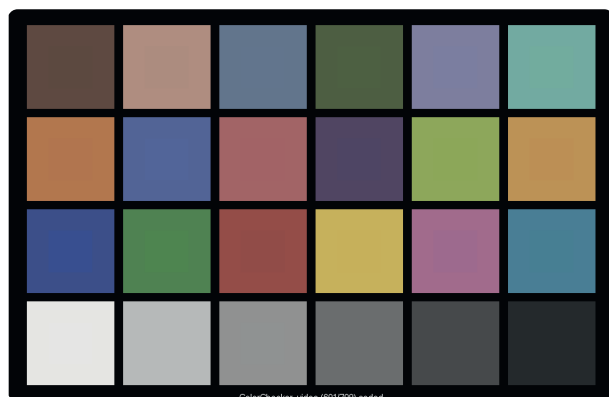


SPECIFICATIONS

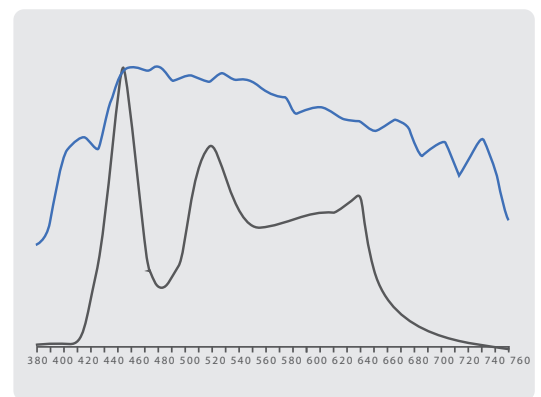
Product type	LED Fresnel Spotlight
Type	Theater Fresnel
Colour spectrum	RGBW
Number of LEDs	1
LED type	240 W (ca. 50,000 Operating Hours)
LED PWM Frequency	Adjustable: 800 Hz, 1200 Hz, 2000 Hz, 3600 Hz, 12000 Hz, 25000
Dispersion	Beam Angle: 17 ° - 53 °, Field Angle: 30 ° - 87 °
Lens	200 mm Fresnel
DMX input	5-Pol
DMX output	5-Pol
DMX mode	10-channel CCT, 10-channel HSI, 14-channel, 3-channel CCT, 3-channel HSI, 4-channel, 7-channel CCT, 7-channel HSI, 8-channel, 9-channel
DMX Functions	CCT, Colour macros, Device Settings, Dim to Warm, Dimmer, Dimmer Curve, Dimmer Fine, Hue Saturation, RGBW, RGBW Fine, strobe
Standalone modes	Loop, Master / Slave mode, Static
Controls	3 x rotary/pushbutton encoder
Indicators	OLED Display
Operating voltage	100 V AC - 240 V AC, 50 - 60 Hz
Power consumption	250 W
Power connector	TRUE1 compatible Power I/O sockets
Housing material	die-cast aluminum
Cabinet colour	Black
Protection class IP	IP20
Cooling	Combination of heat pipe and temperature controlled fan
Luminous flux	6500 lm
Efficiency	27 lm/W
Operating Temperature	-15 - 45 °C
Dimensions including Mounting Bracket	
Width	357 mm
Height	573 mm
Length	322 mm
Weight	11,6 kg

Television Lighting Consistency Index-2012

CCT = D5949 (-0.1)
TLCI-2012: 89 (D5949)



Sector	Lightness	Chroma	Hue
R	0	0	0
R/Y	0	0	0
Y	0	0	0
Y/G	0	-	0
G	0	-	0
G/C	0	-	+++
C	0	0	+++
C/B	0	0	+++
B	0	-	0
B/M	0	-	++
M	0	0	++
M/R	0	0	++



Features and specifications subject to change without notice.

adamhall.com