

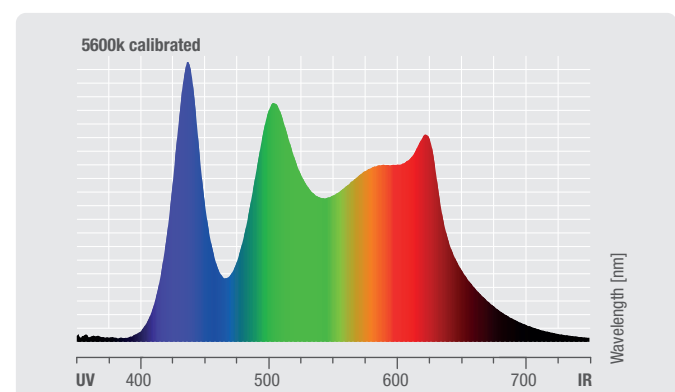
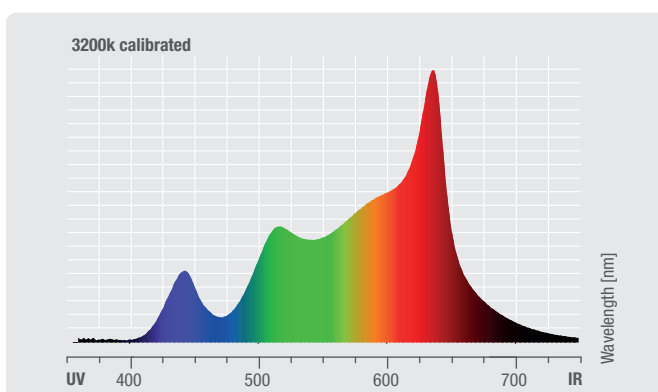
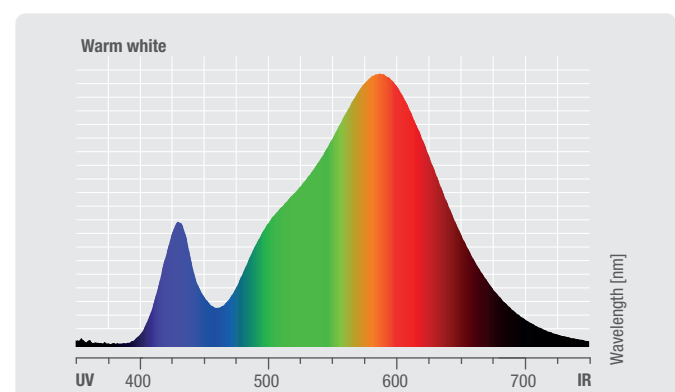
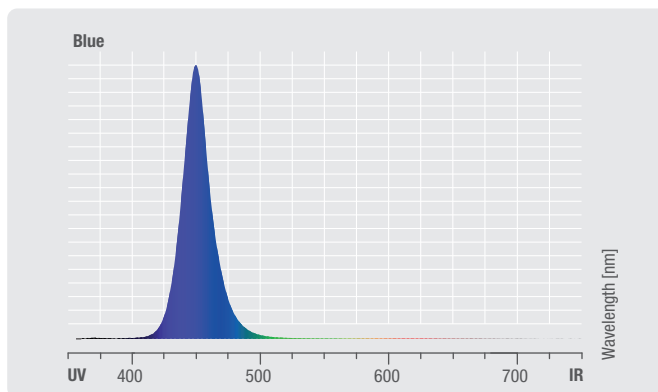
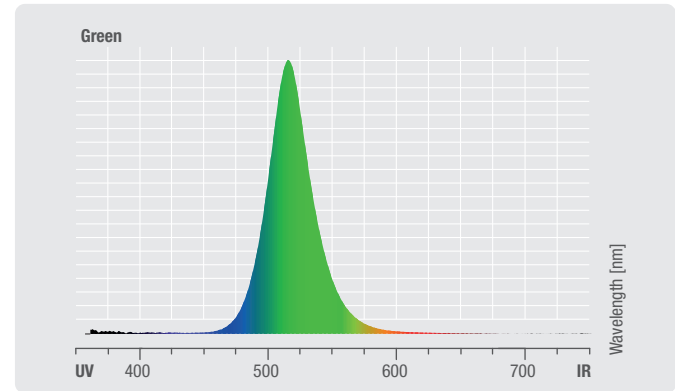
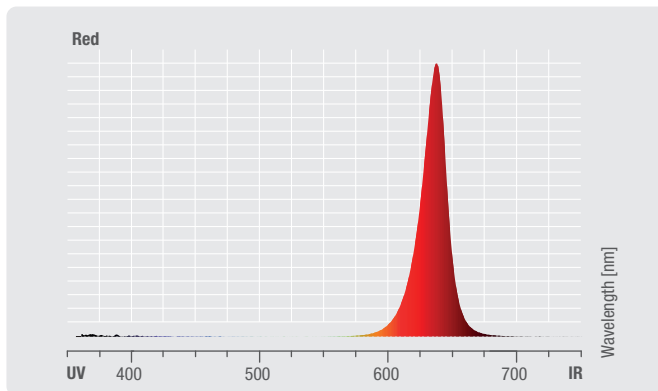
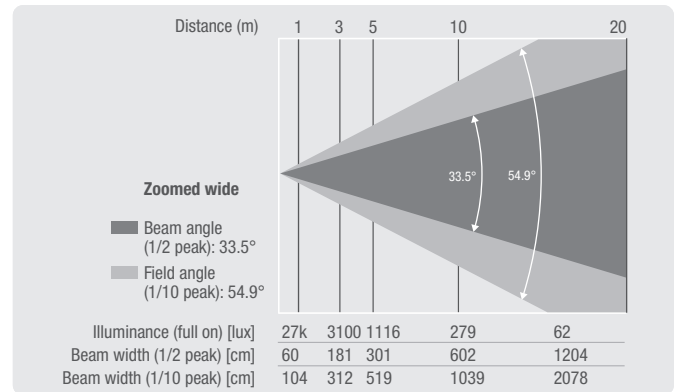
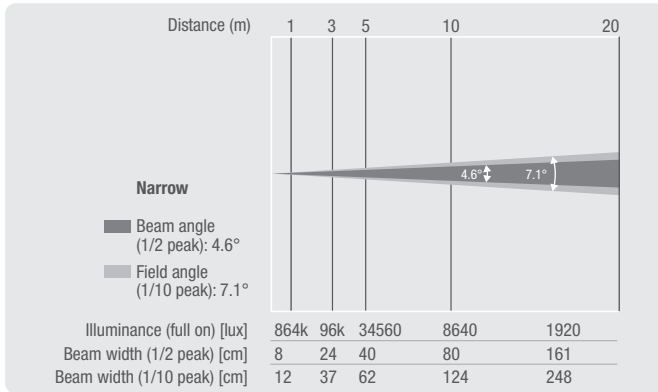


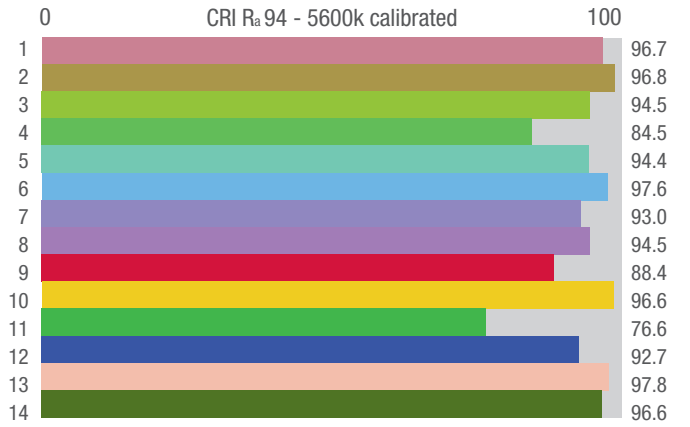
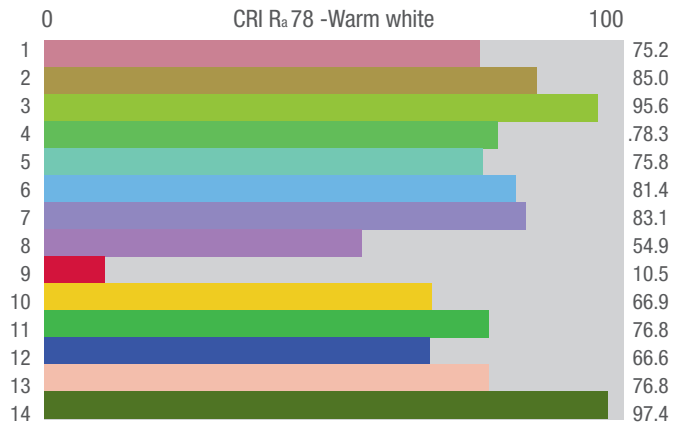
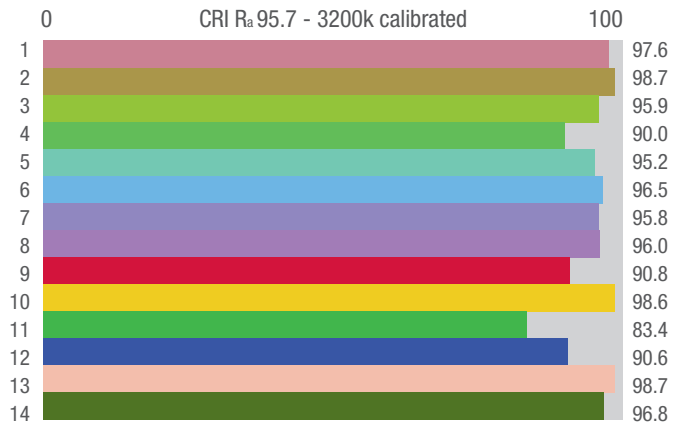
Photometric Measurements

Photometrische Messungen | Mesures Photométriques
Mediciones Fotométricas

EVOS W7 (CLEW7)

	Luminous flux	Chromaticity coordinates		CCT	R _s
Full on (narrow)	6270 lm	x 0.31	y 0.34		
Full on (wide)	12291 lm				
Red	1890 lm	x 0.683	y 0.298		
Green	4622 lm	x 0.180	y 0.595		
Blue	777 lm	x 0.16	y 0.04		
Warm white	3214 lm	x 0.315	y 0.34	3000k	78
3200k calibrated					96
5600k calibrated					94



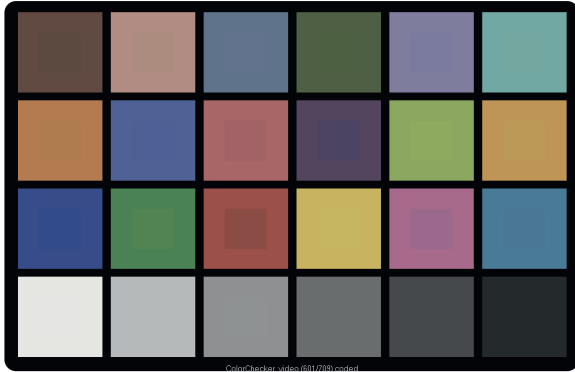


Warm white

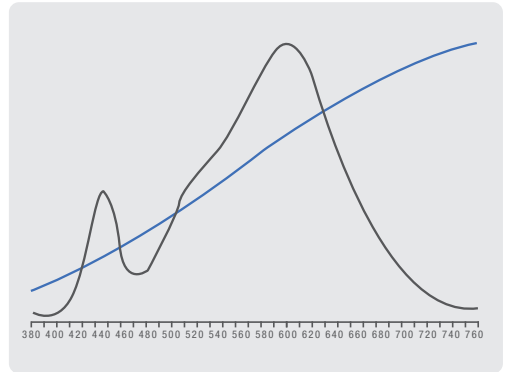
Television Lighting Consistency Index-2012

CCT = P3206 (+0.8)

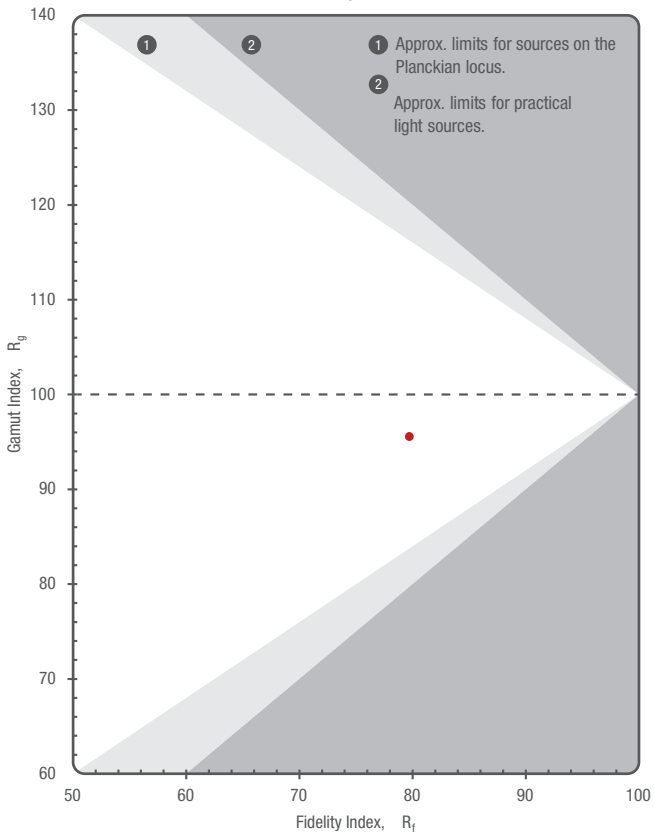
TLCI-2012: 59 (P3206)



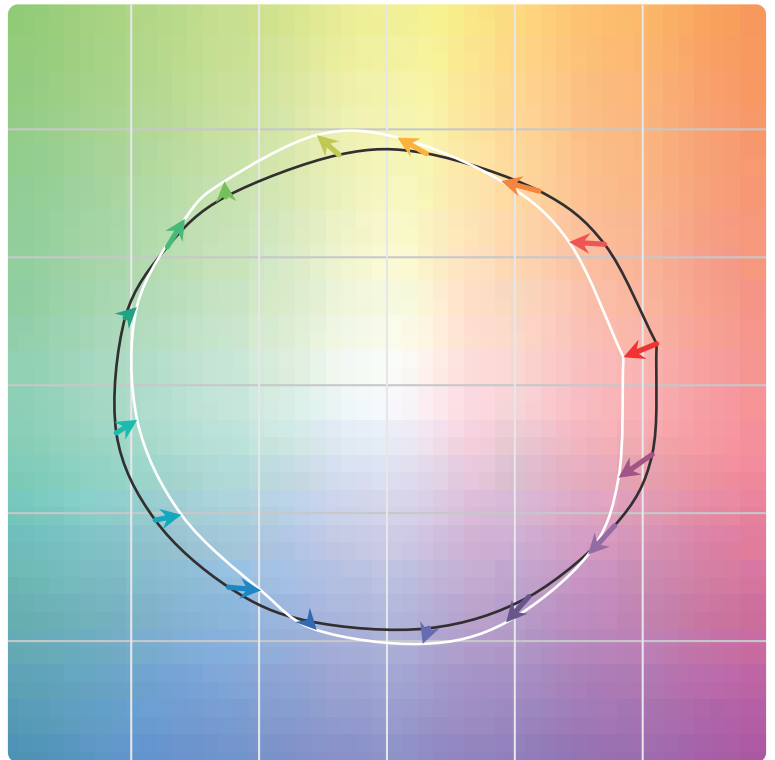
Sector	Lightness	Chroma	Hue
R	++++	++	0
R/Y	0	+	---
Y	0	0	--
Y/G	0	0	0
G	0	0	++
G/C	0	0	++
C	0	0	+++
C/B	++	0	0
B	0	-	--
B/M	++	-	+++++
M	+++	0	+++++
M/R	++++	0	+++++



TM-30-15 R_f 80 R_g 96 R_f - R_g Plot



● Cameo Evos W7 - Warm white

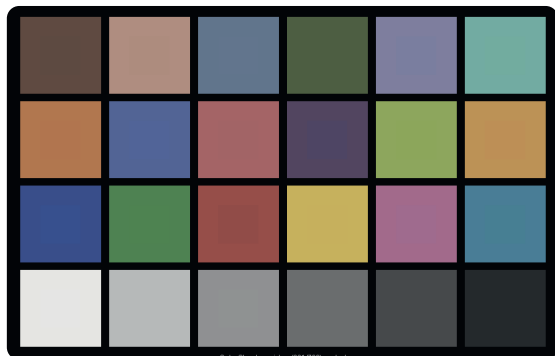


3200k calibrated

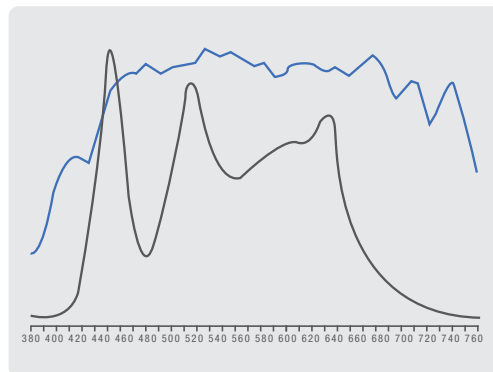
Television Lighting Consistency Index-2012

CCT = D5149 (-0.6)

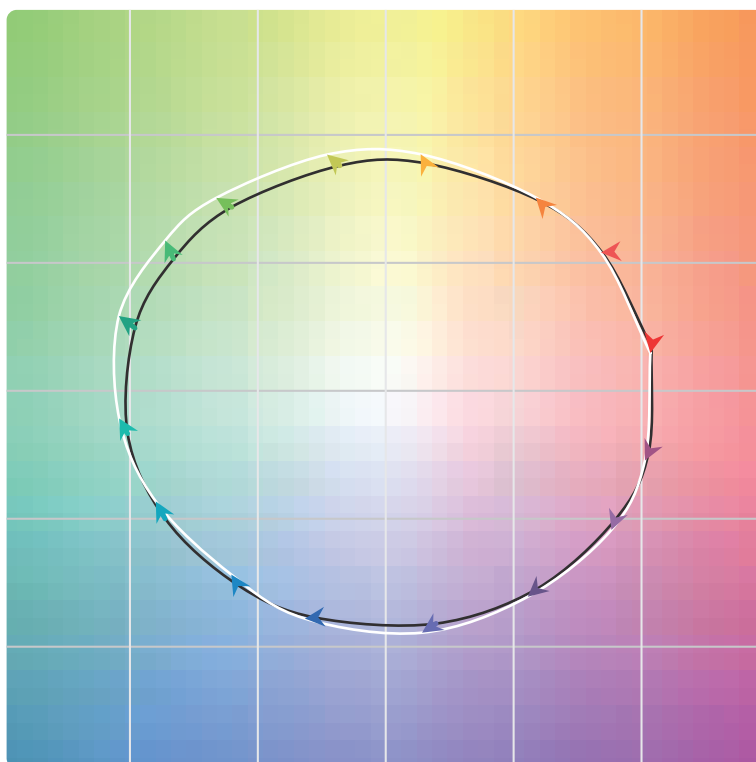
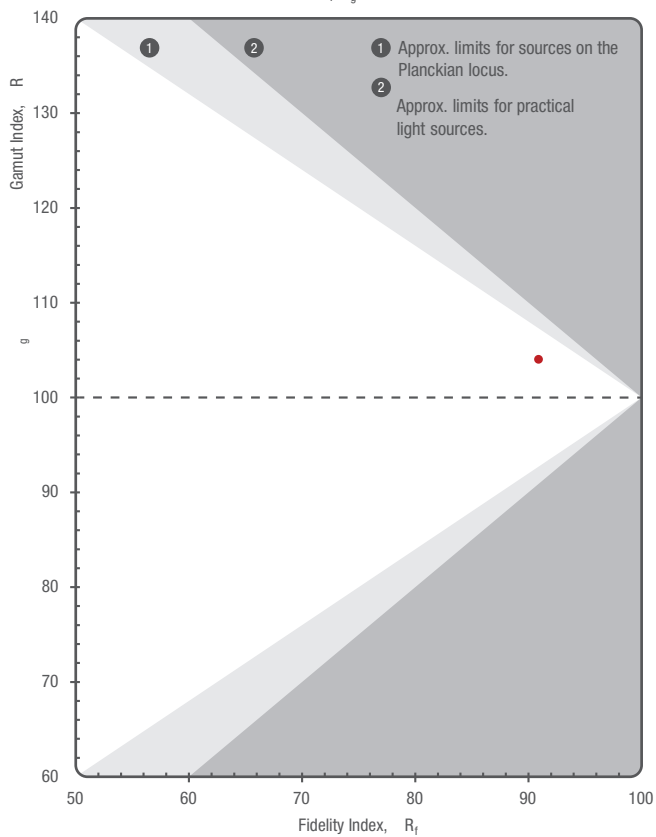
TLCI-2012: 82 (D5149)



Sector	Lightness	Chroma	Hue
R	+	0	0
R/Y	0	0	0
Y	0	0	0
Y/G	0	0	0
G	0	0	+
G/C	0	--	++++
C	0	0	++++
C/B	-	0	++++
B	0	0	0
B/M	0	-	+++
M	0	0	+++
M/R	+	0	++



TM-30-15 R_f 91 R_g 104 R_f-R_g Plot

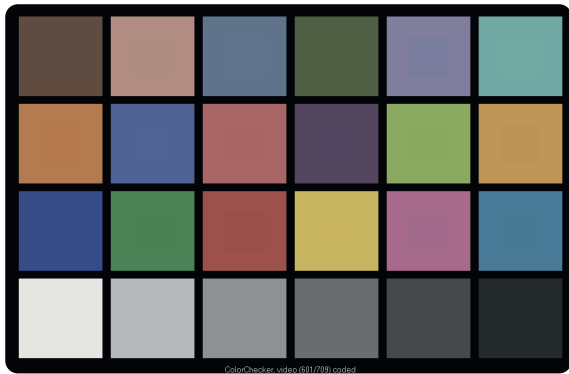


● Cameo Evos W7 - 3200k calibrated

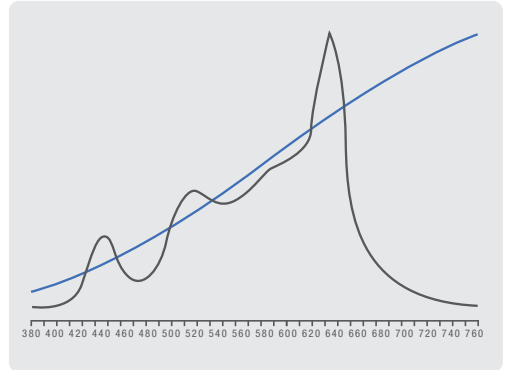
5200k calibrated

Television Lighting
Consistency Index-2012

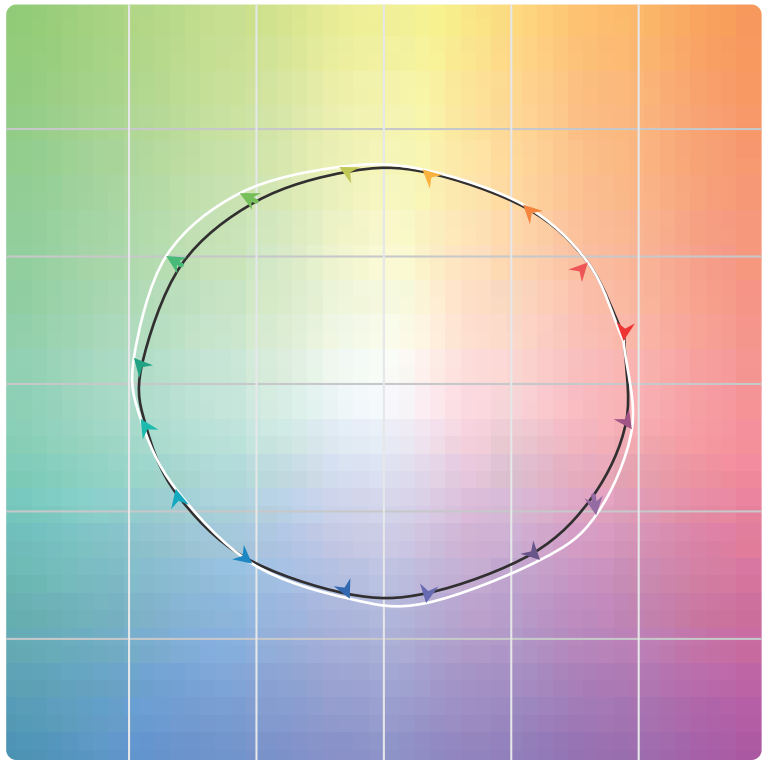
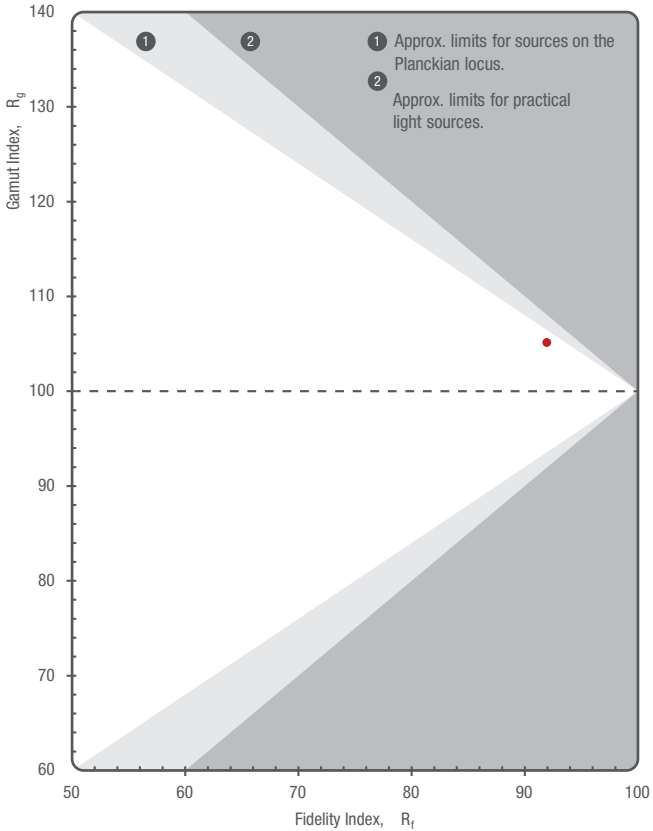
CCT = P3005 (+0.2)
TLCI-2012: 82 (P3005)



Sector	Lightness	Chroma	Hue
R	0	0	0
R/Y	0	0	0
Y	0	0	0
Y/G	0	0	0
G	0	0	0
G/C	0	0	++
C	0	-	+++
C/B	0	+	++++
B	0	0	+
B/M	0	+	++++
M	0	0	+++
M/R	0	0	++



TM-30-15 R_r 92 R_g 105 R_f - R_g Plot



● Cameo Evos W7 - 5200k calibrated