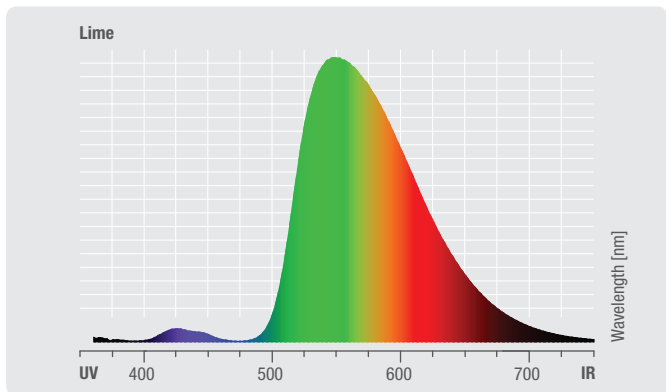
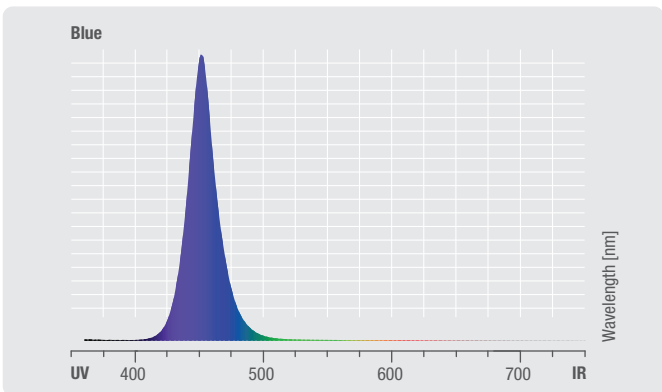
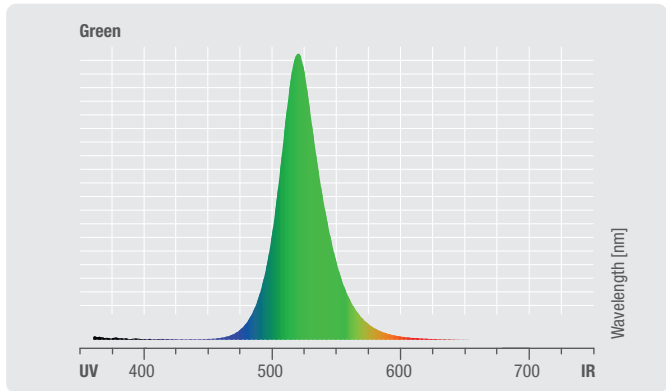
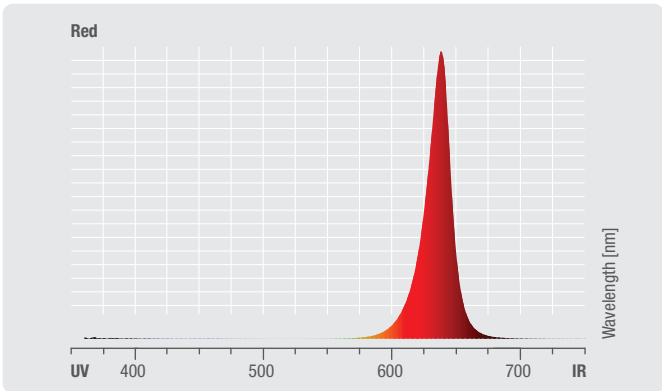
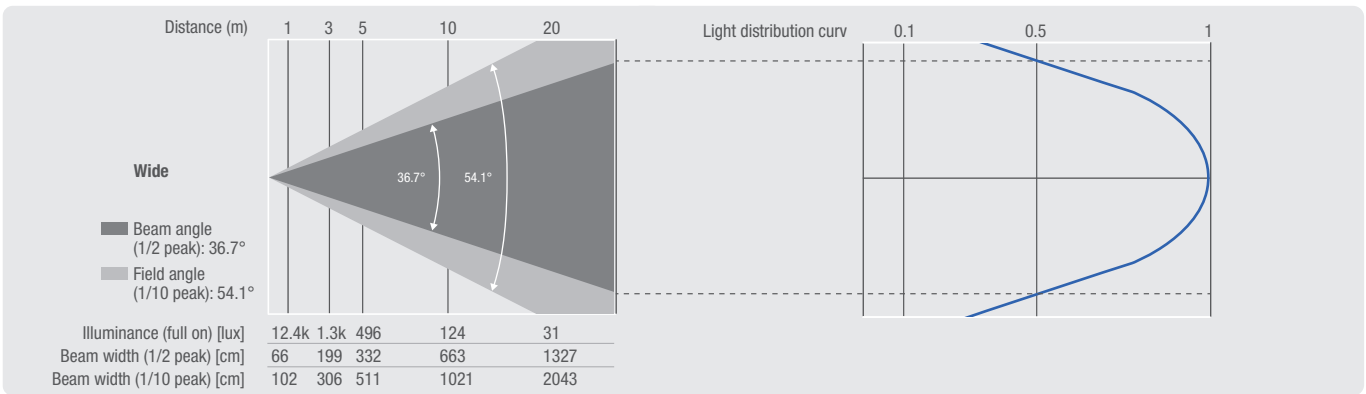
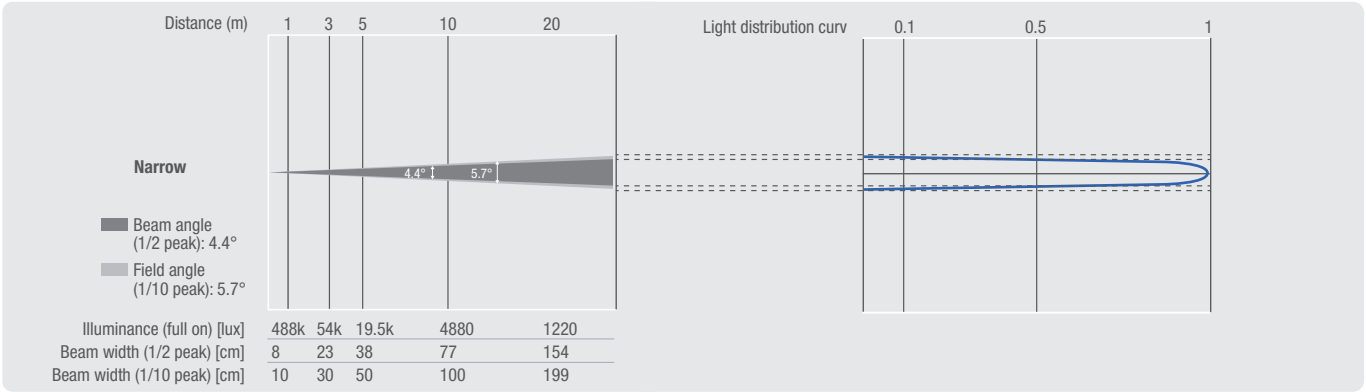


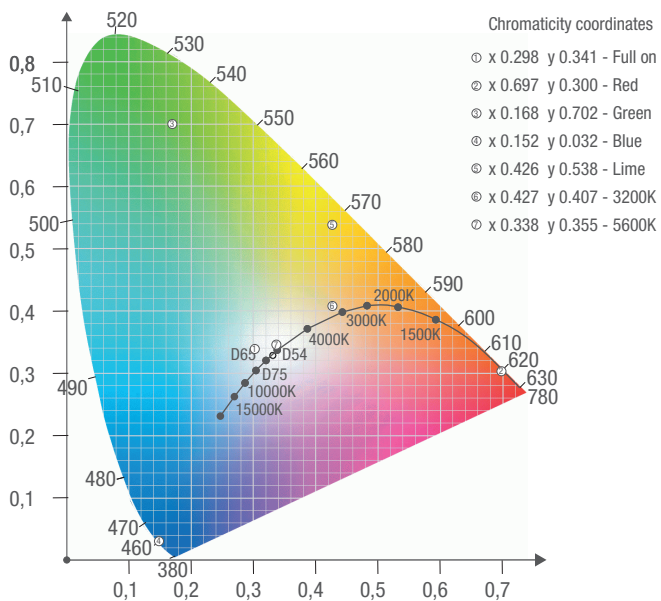
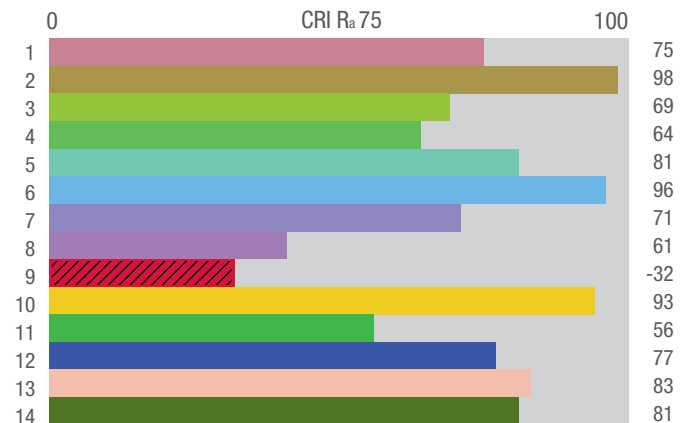
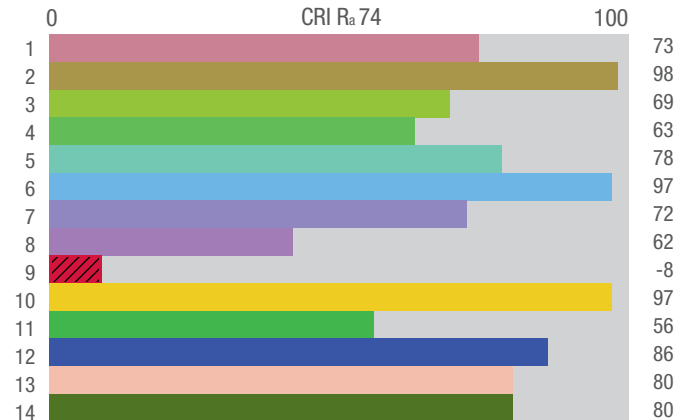
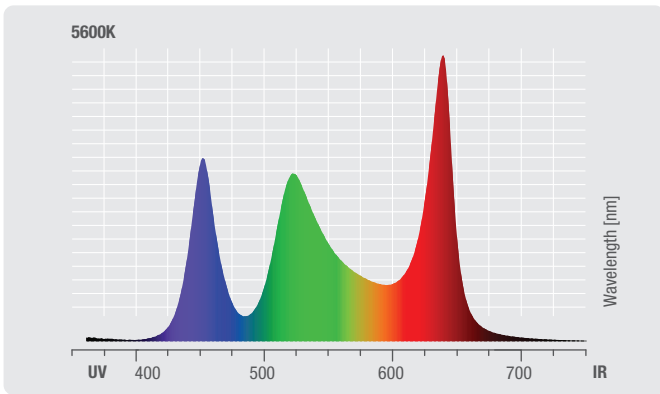
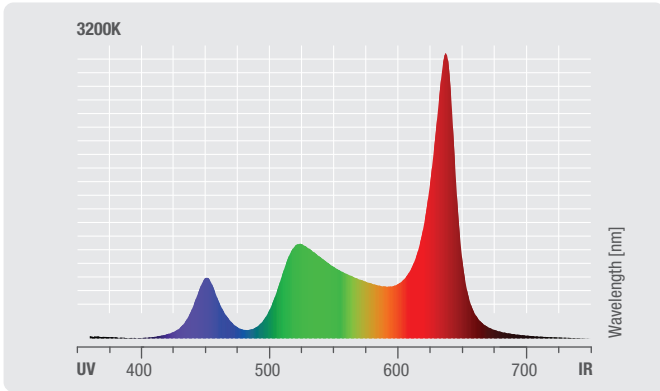
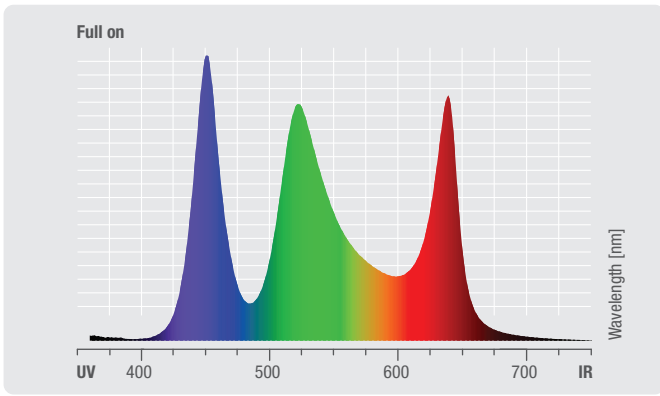
Photometric Measurements

Photometrische Messungen | Mesures Photométriques
 Mediciones Fotométricas

OTOS[®] W3 (CLOTOSW3)

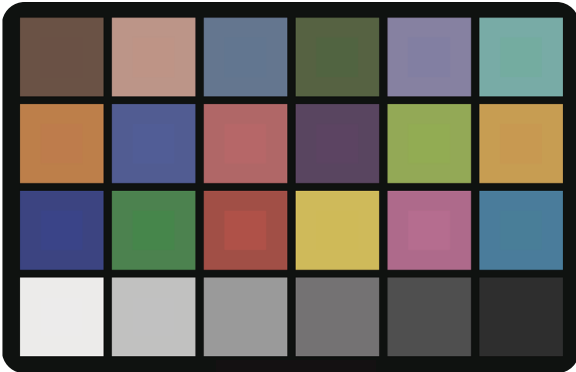
	Luminous flux	Chromaticity coordinates	CCT	R _a
Full on	4091 lm	x 0.298 y 0.341	1.8K - 8.2K	83
Red (calibrated)	704 lm	x 0.697 y 0.300	-	-
Green (calibrated)	1875 lm	x 0.168 y 0.702	-	-
Blue (calibrated)	339 lm	x 0.152 y 0.032	-	-
Lime (calibrated)	2542 lm	x 0.426 y 0.538	-	-
3200K (calibrated)	2755 lm	x 0.427 y 0.407	-	74
5600K (calibrated)	3359 lm	x 0.338 y 0.355	-	75



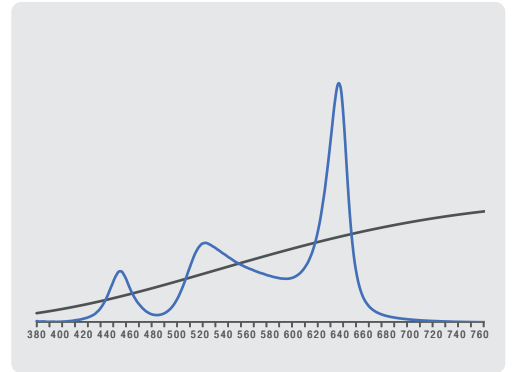


3200K Television Lighting Consistency Index-2012

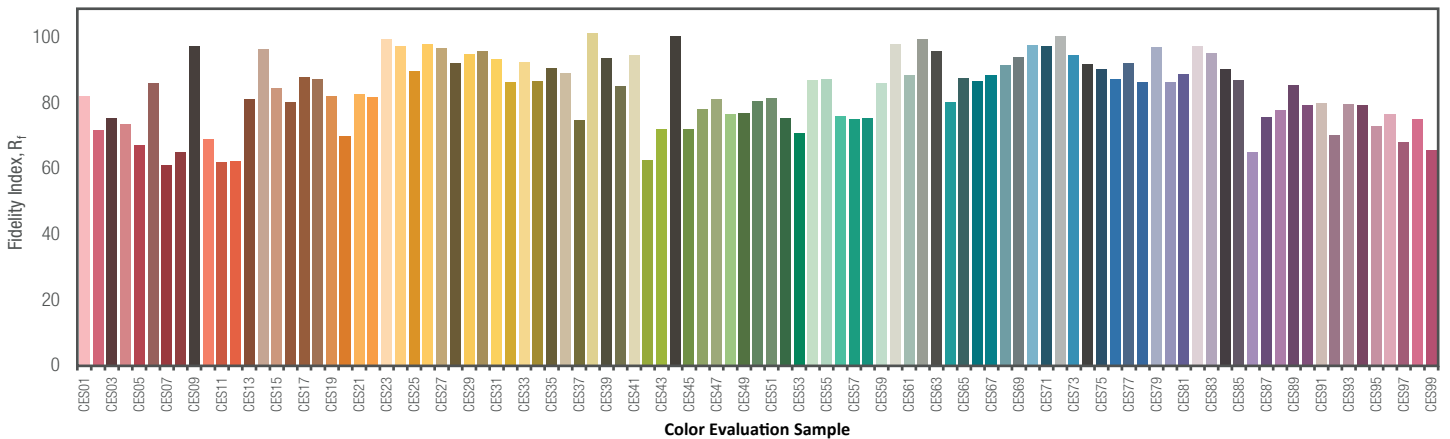
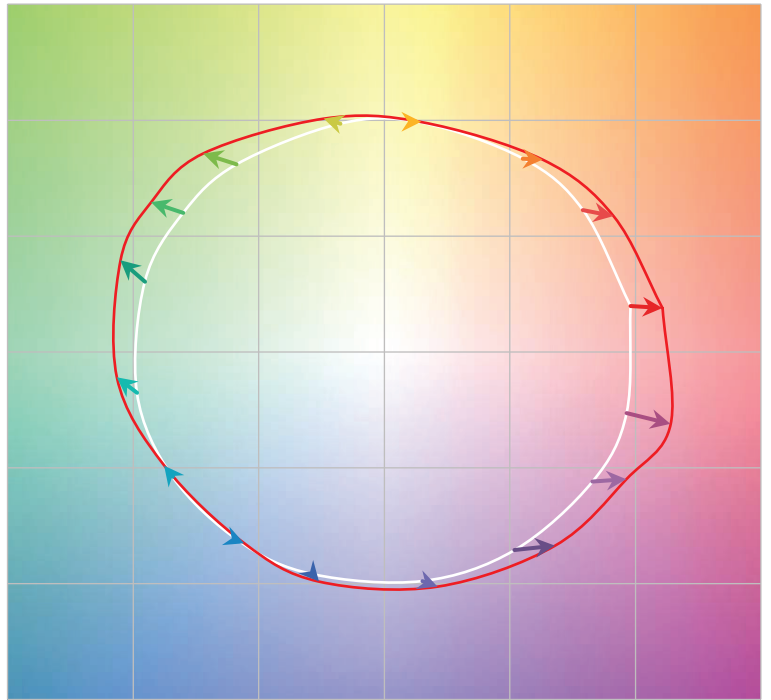
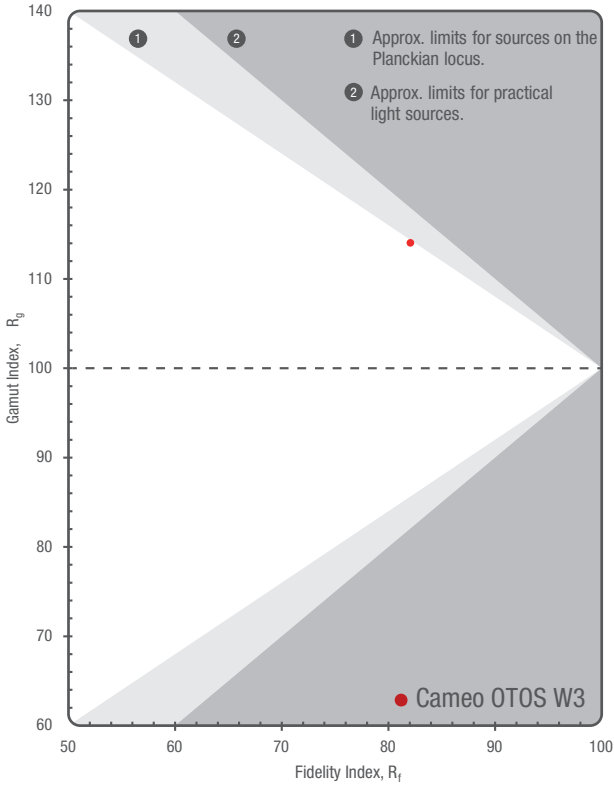
CCT = P3186 (+0.5)
TLCI-2012: 70 (P3186)



Sector	Lightness	Chroma	Hue
R	--	--	0
R/Y	0	0	++
Y	0	0	0
Y/G	0	-	-
G	-	--	-
G/C	0	---	++++
C	0	-	++++
C/B	0	+	++++
B	0	-	0
B/M	+	0	++
M	0	--	0
M/R	---	--	0

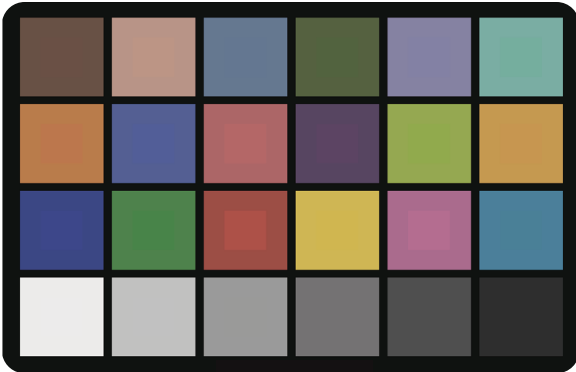


TM-30-15 R_f 82 R_g 114

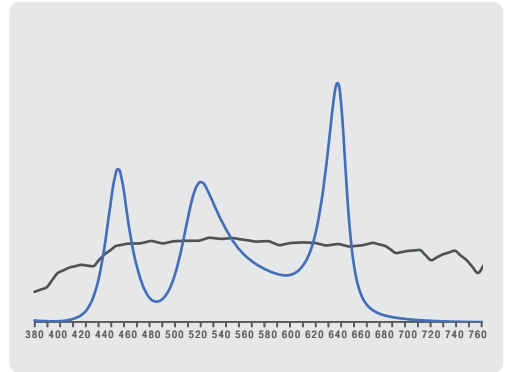


5600K
Television Lighting
Consistency Index-2012

CCT = D5280 (+0.3)
 TLCI-2012: 64 (D5280)



Sector	Lightness	Chroma	Hue
R	---	--	+
R/Y	0	-	+
Y	0	0	0
Y/G	0	--	-
G	0	--	-
G/C	0	---	++++
C	0	-	++++
C/B	0	0	++++
B	0	--	-
B/M	0	-	+
M	-	-	--
M/R	----	--	--



TM-30-15 R_f 80
 R_g 114

