

# FLAT PRO® 18 G2

18 X 10 W RGBWA LED OUTDOOR SPOTLIGHT



## FEATURES

- ▶ 18 x 10-watt 5-in-1 RGBWA LEDs with 6,600 lm luminous flux for warm full and pastel colors
- ▶ IP-65 certified for permanent outdoor use
- ▶ Noiseless & flicker-free operation for theatres, broadcasting & film
- ▶ Professional Neutrik True1-compatible inputs/outputs & IP65 DMX input/output sockets
- ▶ Robust, flat and compact metal housing
- ▶ Patented EZChase® DMX Delay: running lights effect without DMX control
- ▶ OLED display with touch-sensitive keys
- ▶ Calibrated LEDs
- ▶ Improved design with built-in carry grip
- ▶ Optionally available: SPIN 16 spigot, Omega bracket

## DESCRIPTION

Set up, connect, finished! The FLAT PRO® 18 G2 LED PAR spotlight offers you a professional outdoor allrounder that saves you a lot of work under adverse conditions: whether as a calibrated and compact IP65 uplight fixed to a building facade, as a noiseless light source in theatres or as an effects light for live shows.

Its patented EZChase® DMX delay feature allows you to create running lights effects without an external controller. This saves on DMX channels as well as time and patience. You can also rely on it to always provide consistent ambient lighting. Regardless of how many FLAT PRO® G2s you connect together, the integrated calibration chip ensures that full and pastel RGBWA color spectrum colors can be used without any deviations.

The FLAT PRO® 18 G2 comprises 18x 10-watt 5-in-1 RGBWA LEDs for an impressive luminous flux of 6,600 lm. Thanks to its adjustable PWM frequency (650 Hz to 25 kHz), there's no need to worry about flickering LEDs when dimming for theatres, TV studios, film sets or light festivals.

An outdoor IP65 flat PAR spotlight is only as good as its handling. That's why we've optimised many points of the series' design. The handle is inconspicuously integrated into the compact metal housing, while the OLED display with touch-sensitive keys delivers fast and simple operation. Every seconds counts when working in wind and rain. The redesigned convection cooling and the professional connection options with Neutrik True-compatible inputs and outputs and 3-pin IP65 DMX sockets all offer the highest possible reliability.

For even greater installation flexibility, the FLAT PRO® 18 G2 can also be optionally retrofitted with a fold-out 16-mm TV spigot that uses patented SPIN16® technology.

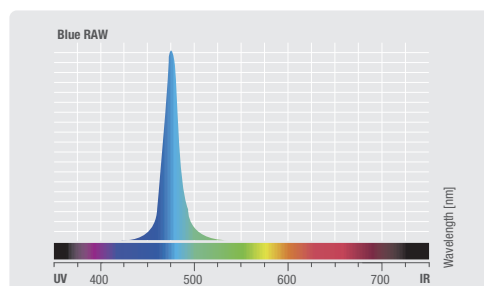
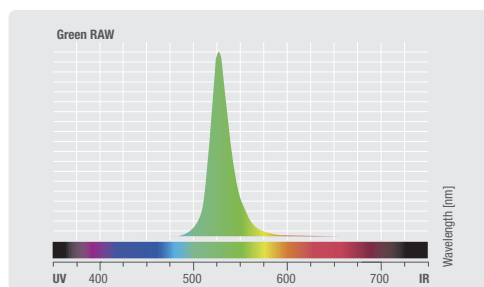
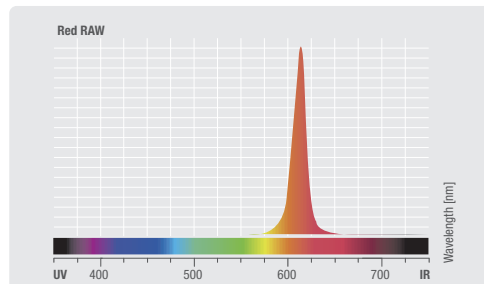
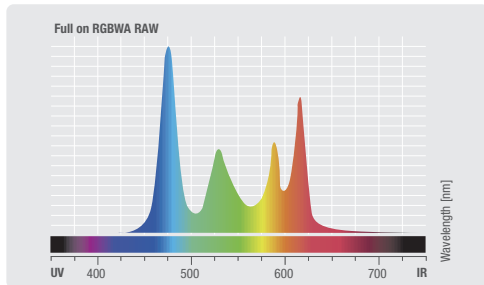
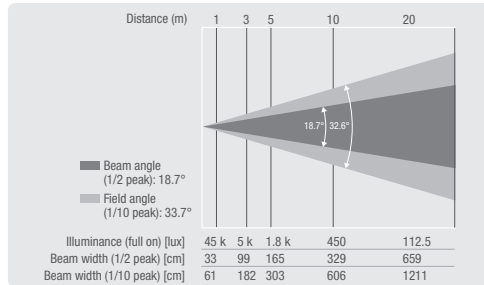
The versatile FLAT PRO® 18 G2 IP65 LED PAR spotlight is ideal for all lumen beings looking for an uncompromising way to express their passion for lighting in the great outdoors.

# FLAT PRO® 18 G2

## 18 X 10 W RGBWA LED OUTDOOR SPOTLIGHT

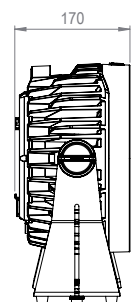
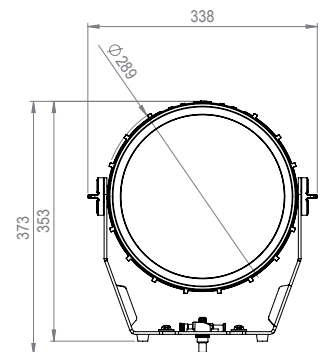
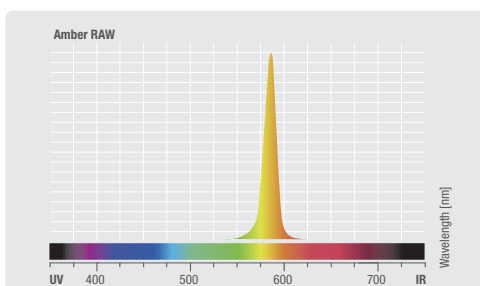
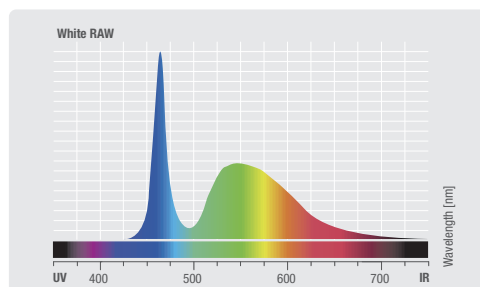


### PHOTOMETRICAL DATA



### SPECIFICATIONS

Product type	LED PAR Lighting
Color spectrum	RGBWA
Number of LEDs	18
LED type	10 W
Dispersion	30 °
DMX input	XLR 3-pin male
DMX output	XLR 3-pin female
DMX mode	11-channel, 14-channel, 2-channel, 4-channel 1, 4-channel 2, 6-channel 1, 6-channel 2
DMX Functions	color fade, Color presets, Color temperature correction, Dimmer, Dimmer Fine, DMX Delay, RGBWA, Speed Selection, strobe, System settings
Control	DMX512, RDM
Standalone modes	Auto programs, CCT, Color presets, Loop, User Colors
Controls	Down, Enter, Mode, Up
Indicators	OLED Display
Operating voltage	100 V AC - 240 V AC, 50 - 60 Hz
Power consumption	170 W
Max. output current	10 A
Housing material	Metal
Cabinet color	Black
Protection class IP	IP65
Cooling	Convection
Luminous flux	6600 lm
Calibration modes	calibrated, RAW, User
Fuse	F4A / 250 V
Operating Temperature	-15 - 40 °C
Relative Humidity	< 80 %, not condensing
Width	339 mm
Height	353 mm
Length	170 mm
Weight	7,5 kg
Accessories (included)	Power cord



Features and specifications subject to change without notice.

[adamhall.com](http://adamhall.com)