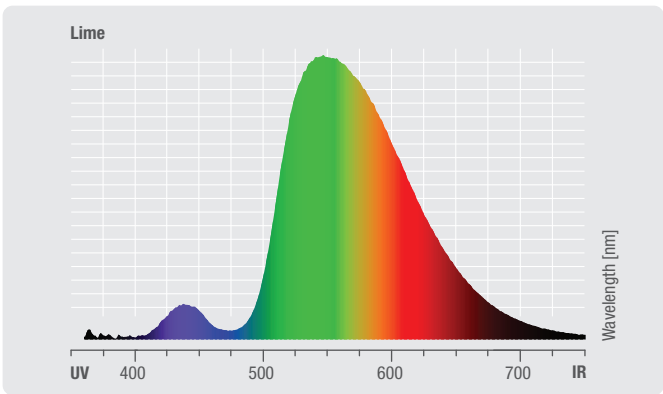
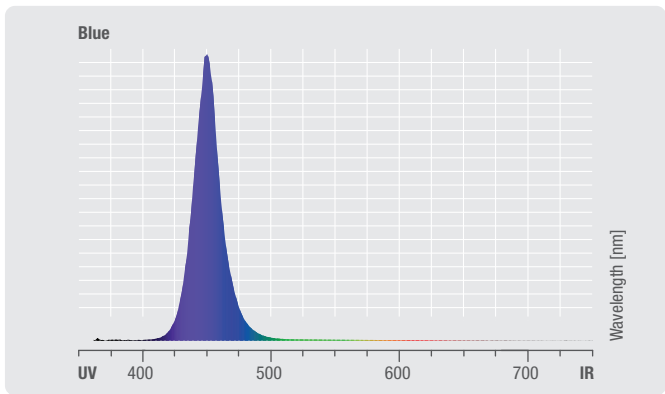
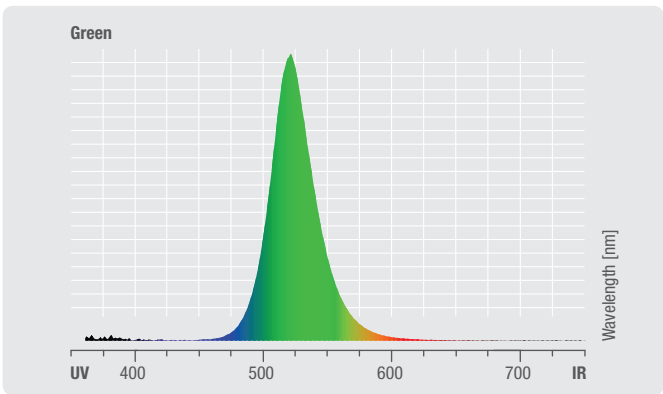
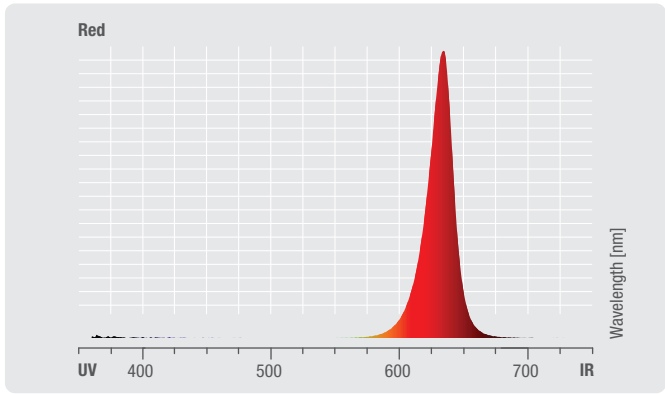
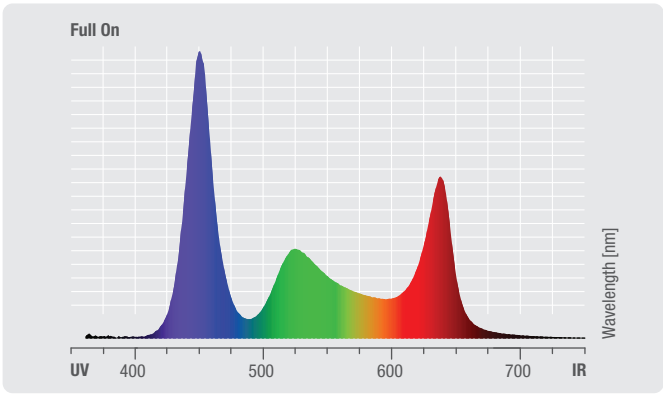
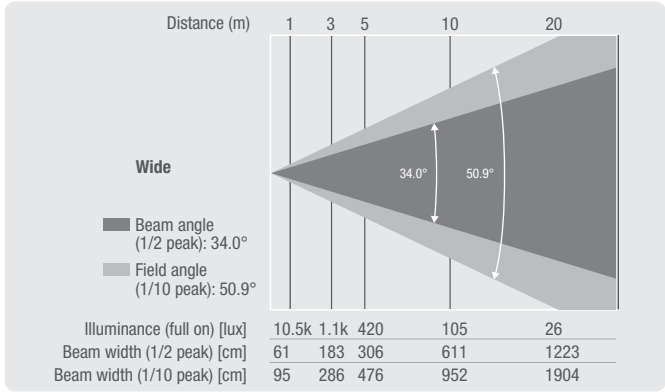
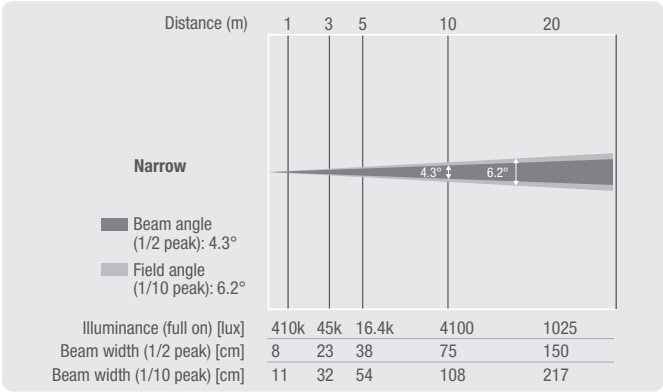


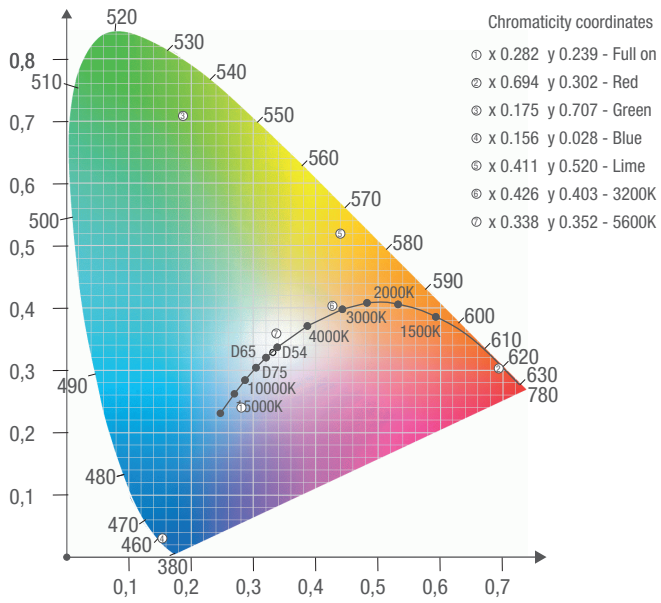
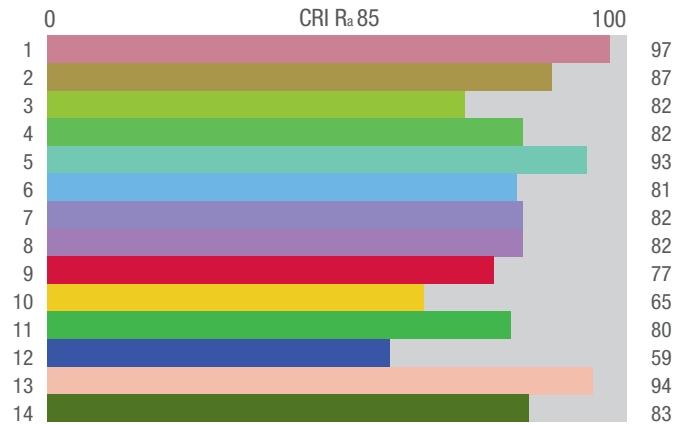
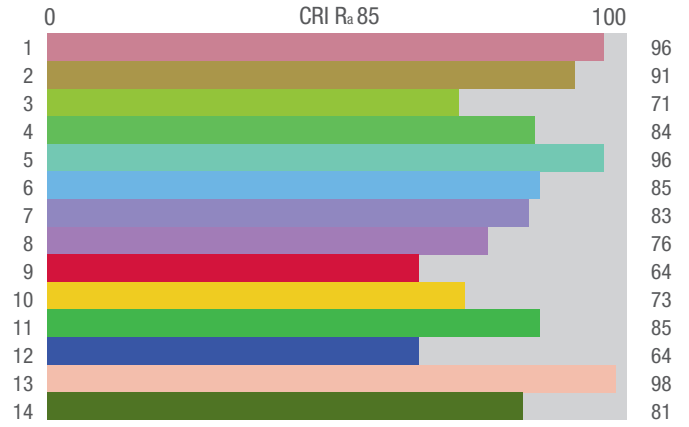
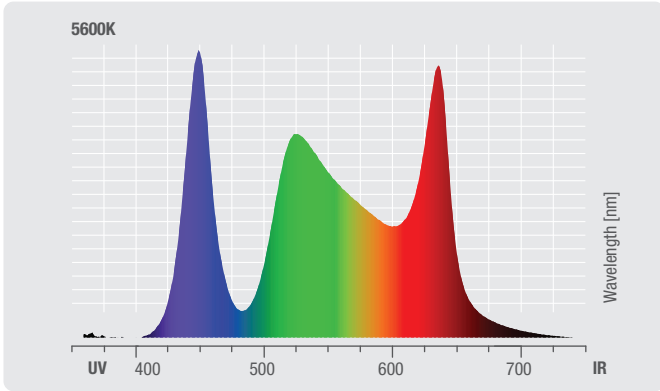
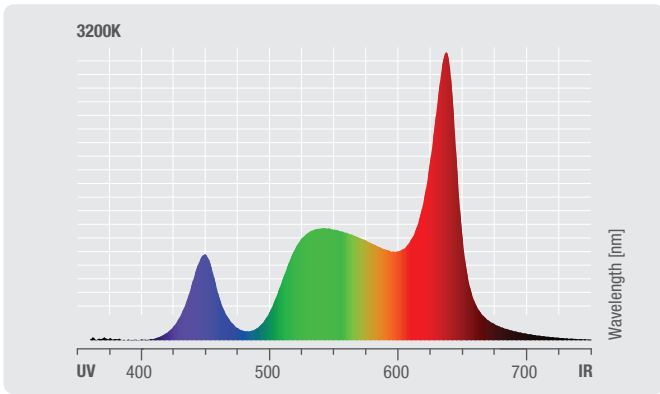
Photometric Measurements

Photometrische Messungen | Mesures Photométriques
Mediciones Fotométricas

AZOR[®] W2 (CLAZORW2)

	Luminous flux	Chromaticity coordinates	CCT	R _a
Full on	3190 lm	x 0.282 y 0.239	2.5K - 8.5K	85
Red	568 lm	x 0.694 y 0.302	-	-
Green	898 lm	x 0.175 y 0.707	-	-
Blue	195 lm	x 0.156 y 0.028	-	-
Lime	1760 lm	x 0.411 y 0.520	-	-
3200K	2036 lm	x 0.426 y 0.403	-	-
5600K	2318 lm	x 0.338 y 0.352	-	-

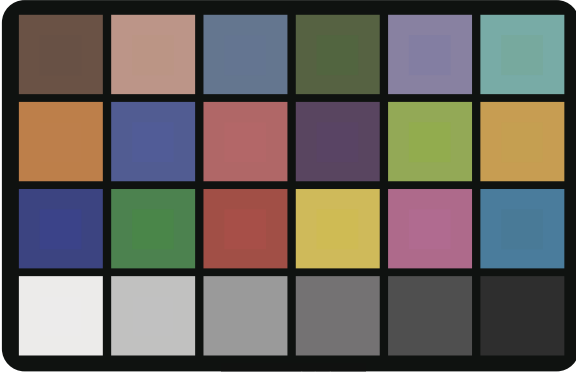




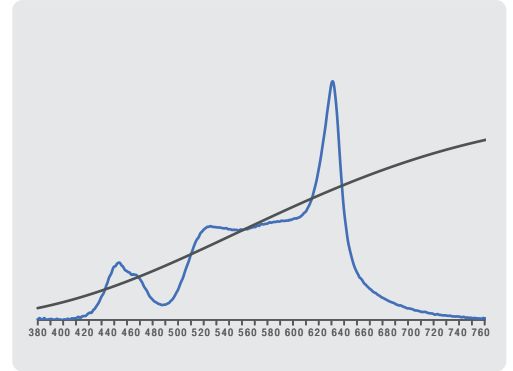
3200K Television Lighting Consistency Index-2012

CCT = P3178 (+0.3)

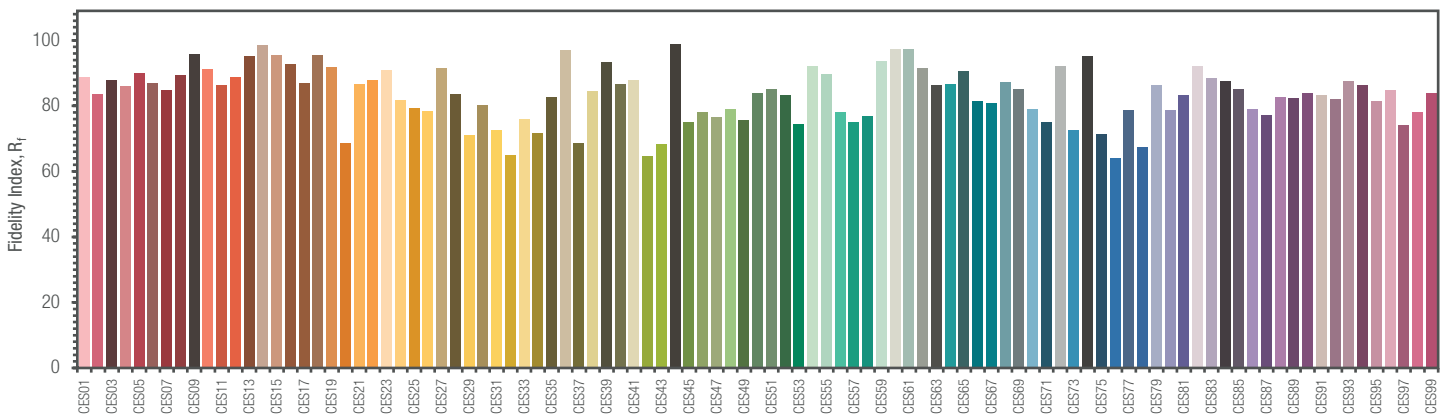
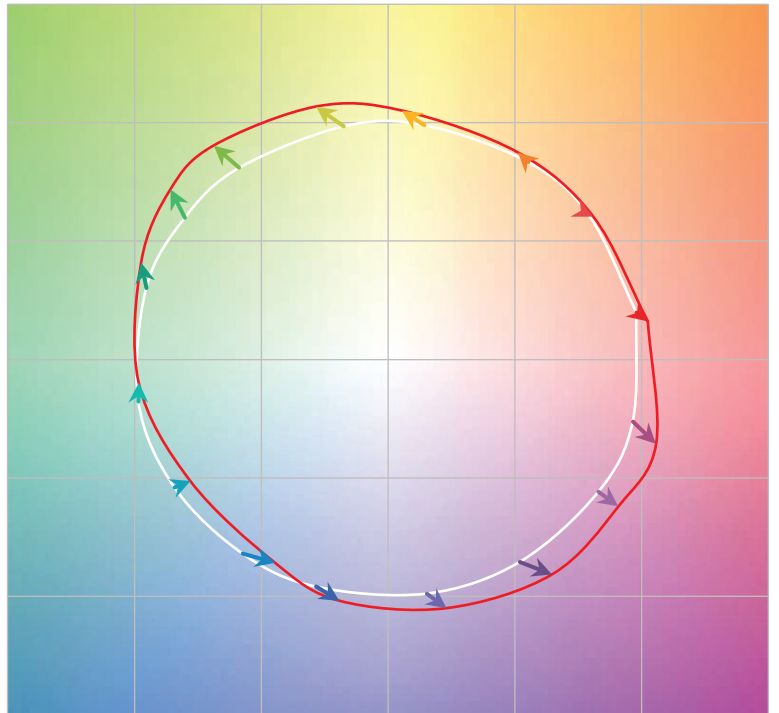
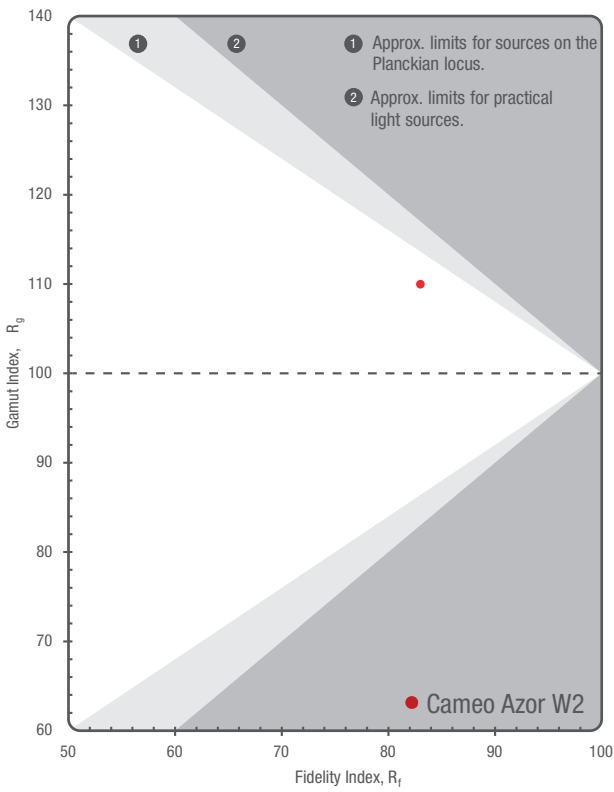
TLCI-2012: 74 (P3178)



Sector	Lightness	Chroma	Hue
R	-	0	0
R/Y	0	0	-
Y	0	-	--
Y/G	0	--	0
G	-	--	0
G/C	0	--	++++
C	+	0	+++
C/B	+	+	+
B	0	--	--
B/M	++	--	++
M	0	---	++
M/R	0	--	++



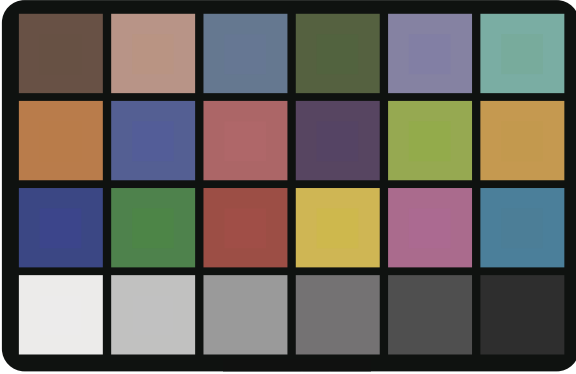
TM-30-15 R_f 83
R_g 110



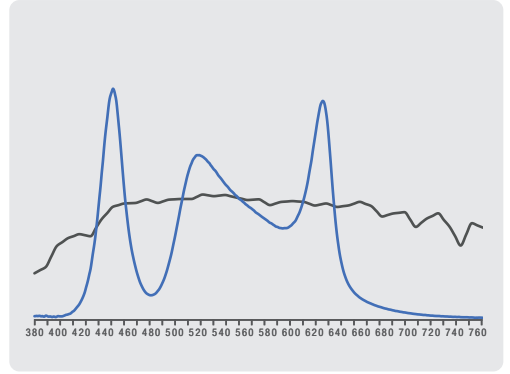
Color Evaluation Sample

**5600K
Television Lighting
Consistency Index-2012**

CCT = D5267 (+0.0)
TLCI-2012: 81 (D5267)



Sector	Lightness	Chroma	Hue
R	0	0	0
R/Y	0	0	-
Y	0	-	--
Y/G	-	--	0
G	-	--	0
G/C	0	--	++++
C	+	0	++
C/B	+	0	0
B	0	--	--
B/M	0	--	+
M	0	--	+
M/R	0	-	+



TM-30-15 R_f 83
R_g 107

