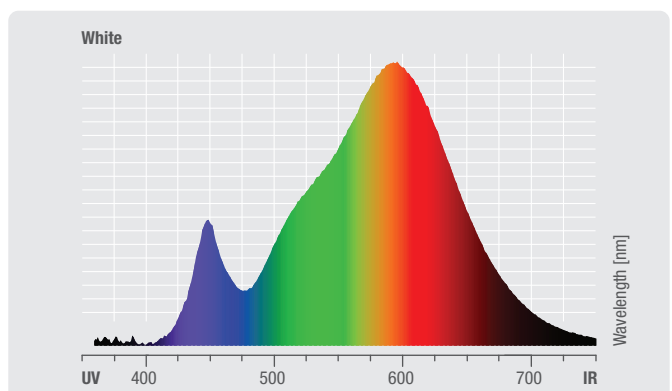
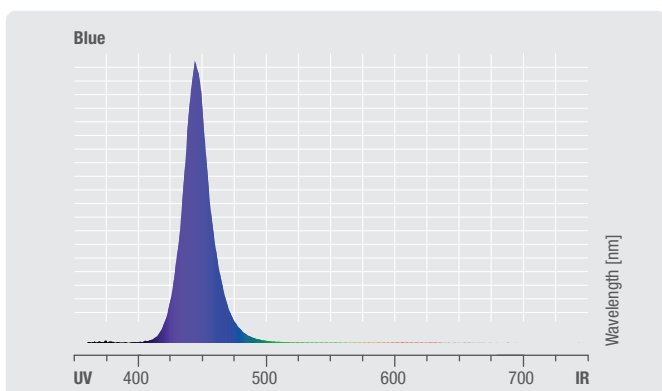
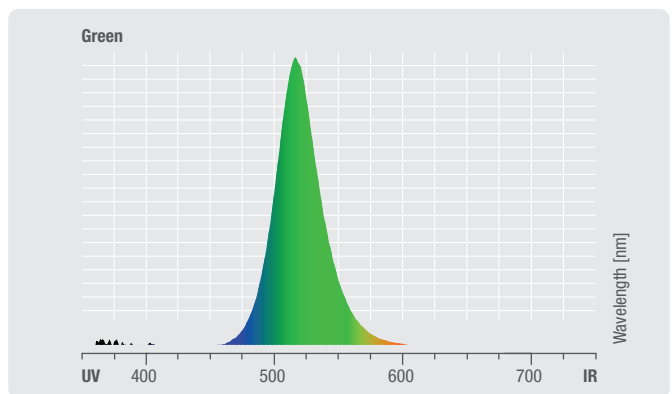
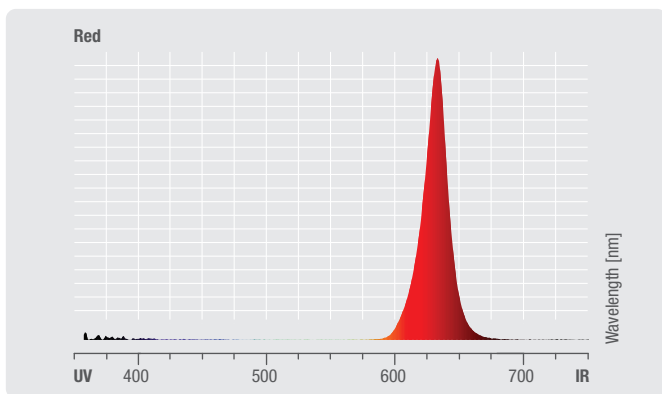
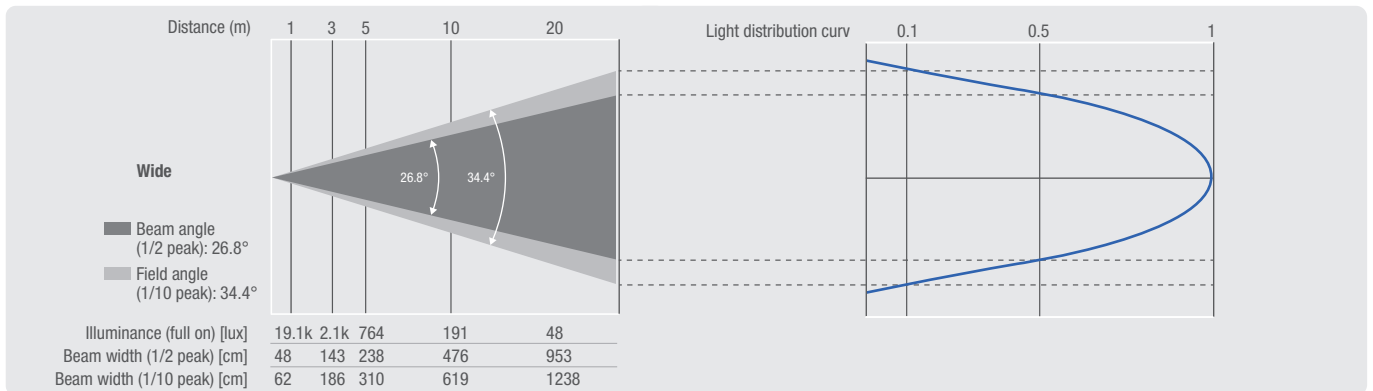
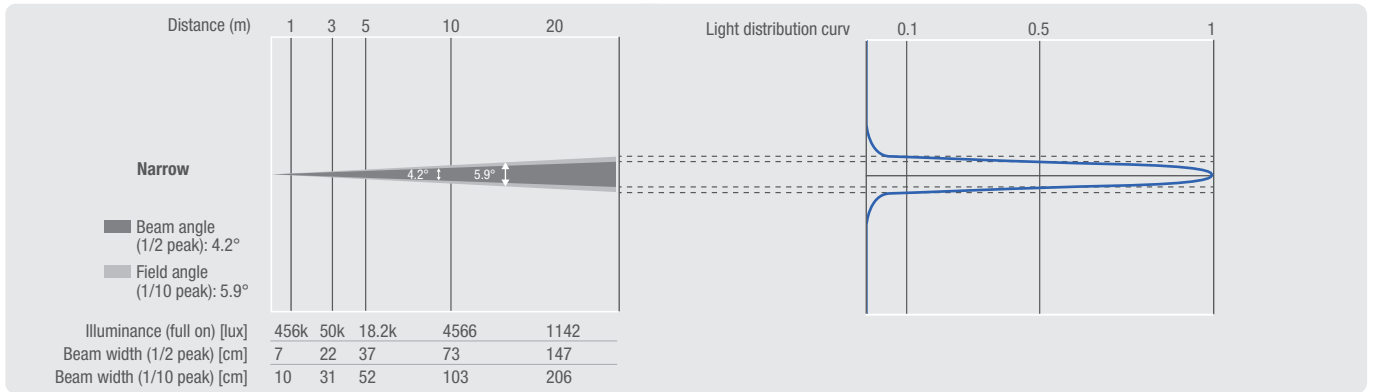


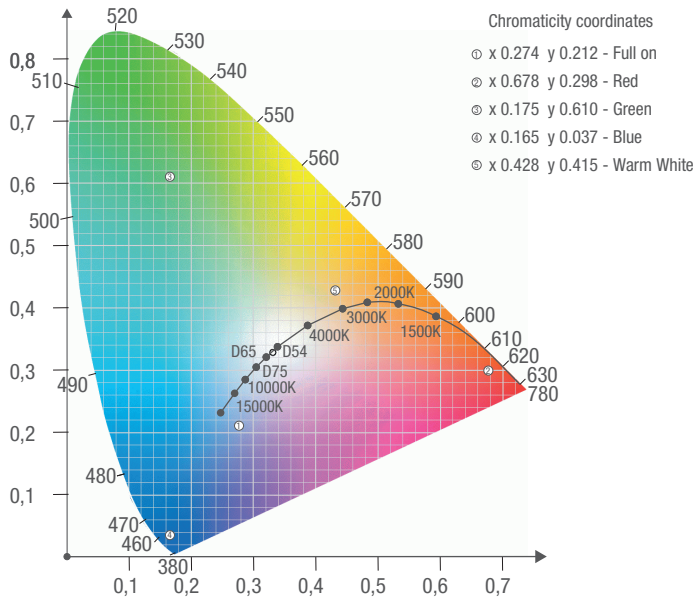
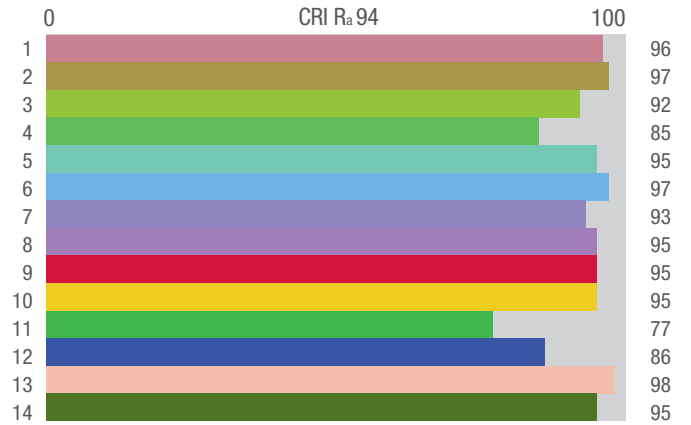
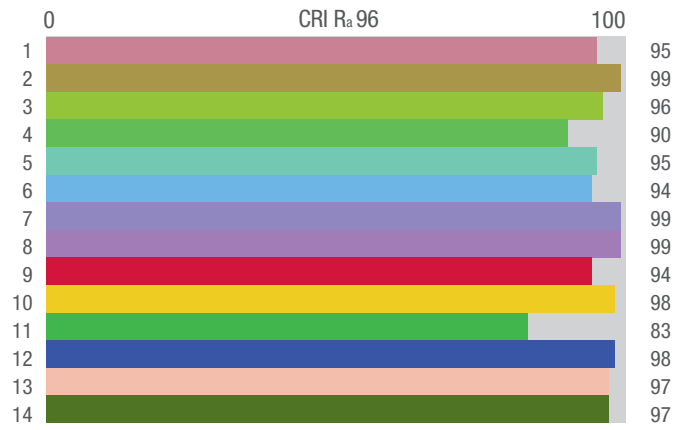
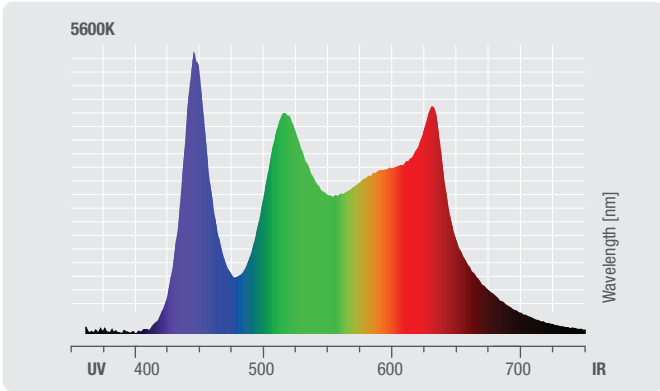
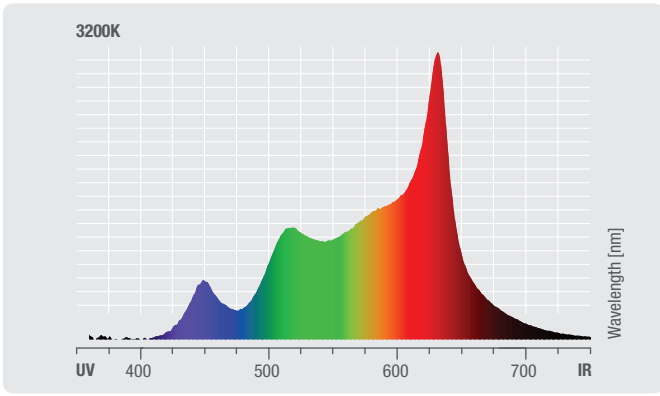
Photometric Measurements

Photometrische Messungen | Mesures Photométriques
 Mediciones Fotométricas

EVOS® W7 IP (CLEW7IP)

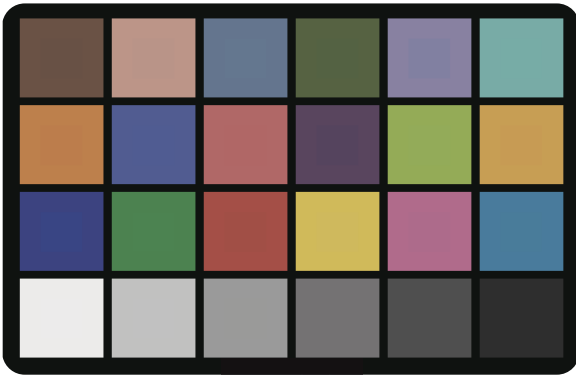
	Luminous flux	Chromaticity coordinates	CCT	R _a
Full on (RAW)	8700 lm	x 0.274 y 0.212	2.7K - 6.5K	95
Red (calibrated)	1574 lm	x 0.678 y 0.298	-	-
Green (calibrated)	3342 lm	x 0.175 y 0.610	-	-
Blue (calibrated)	843 lm	x 0.165 y 0.037	-	-
Warm White (RAW)	3987 lm	x 0.428 y 0.415	-	-
3200K (calibrated)	4806 lm	-	-	96
5600K (calibrated)	5417 lm	-	-	94



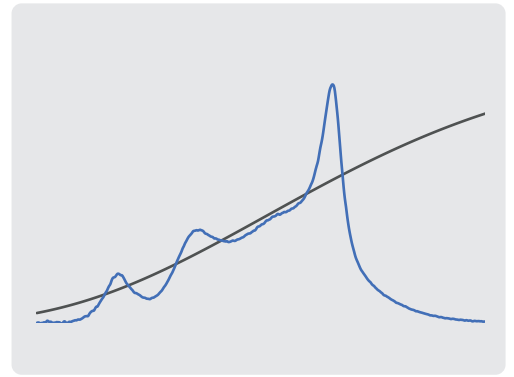


3200K Television Lighting Consistency Index-2012

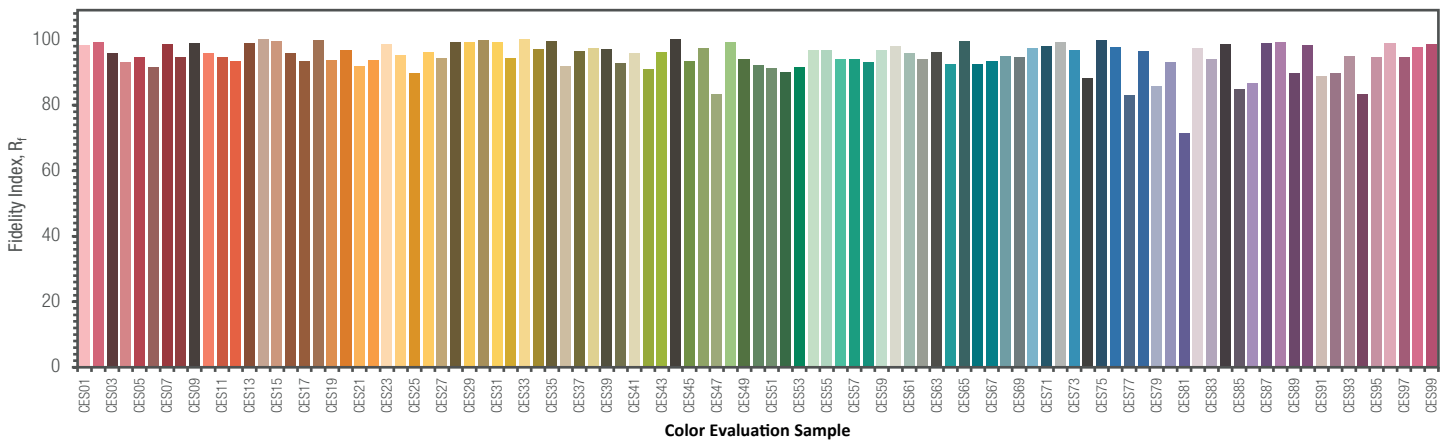
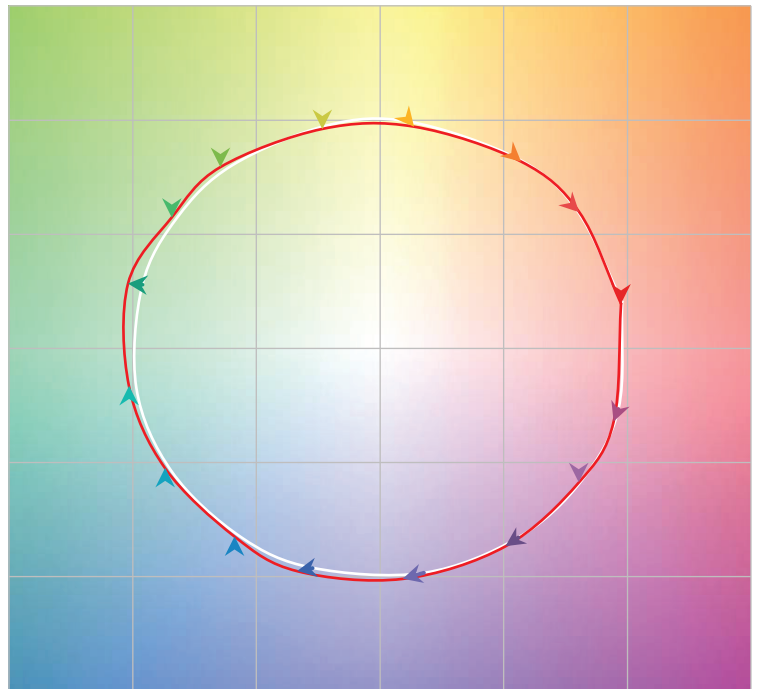
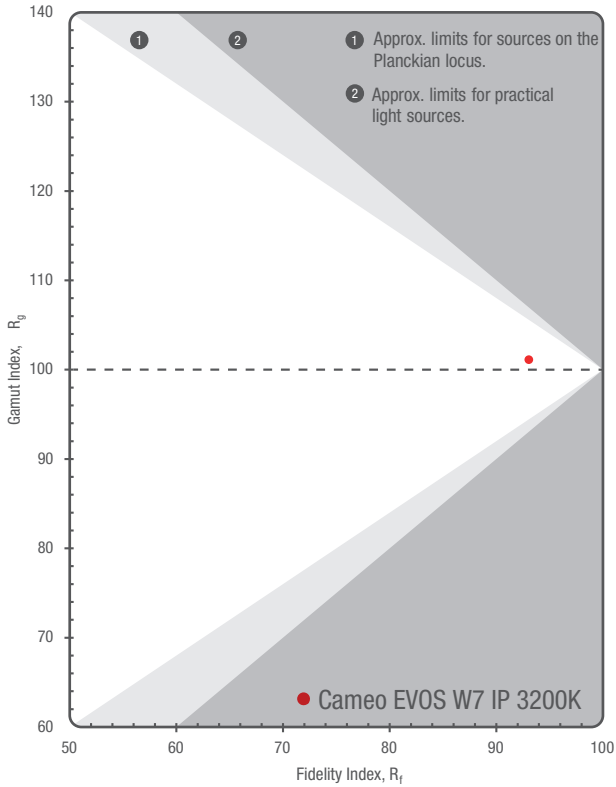
CCT = P2947 (+0.6)
TLCI-2012: 86 (P2947)



Sector	Lightness	Chroma	Hue
R	0	0	0
R/Y	+	0	+
Y	0	0	0
Y/G	0	0	0
G	0	0	0
G/C	0	0	0
C	0	-	++
C/B	-	0	+++
B	0	0	+
B/M	0	0	++
M	+	0	+++
M/R	+	0	+

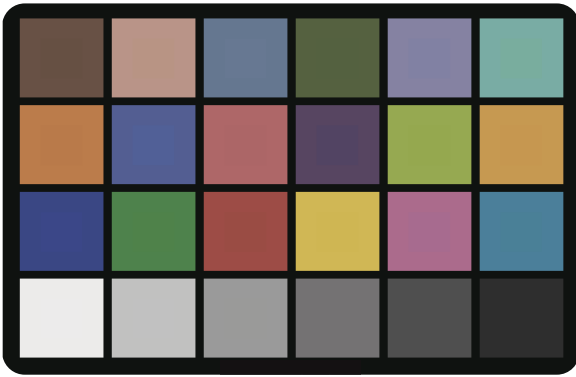


TM-30-15 R_f 93
 R_g 101

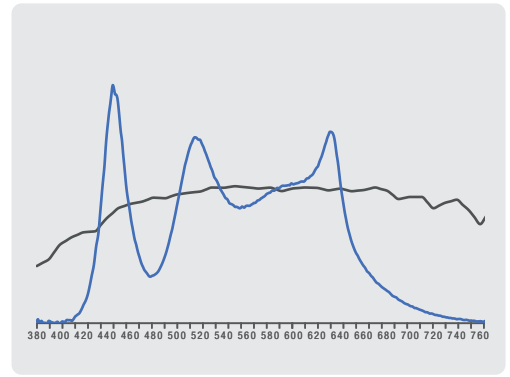


5600K Television Lighting Consistency Index-2012

CCT = M4943 (-0.9)
TLCI-2012: 80 (M4943)



Sector	Lightness	Chroma	Hue
R	0	0	0
R/Y	0	0	0
Y	0	0	0
Y/G	0	0	0
G	0	-	+
G/C	0	--	++++
C	0	0	++++
C/B	0	0	++++
B	0	-	0
B/M	0	-	+++
M	0	0	+++
M/R	0	0	+++



TM-30-15 R_f 91
 R_g 107

