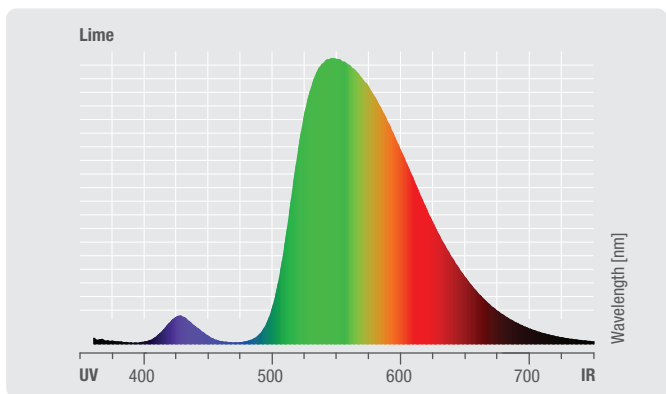
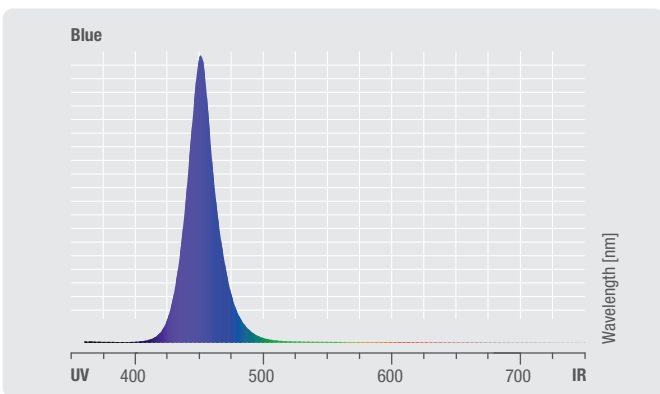
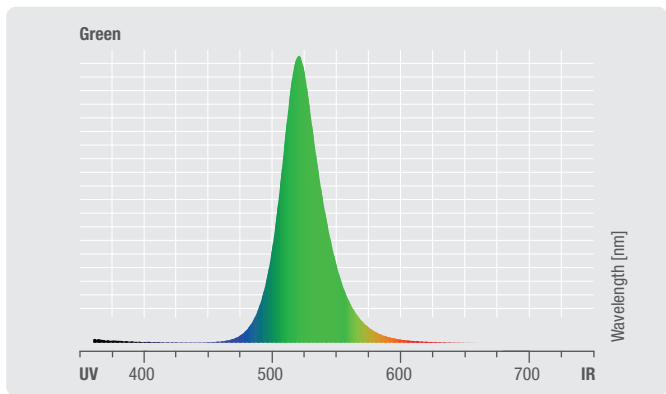
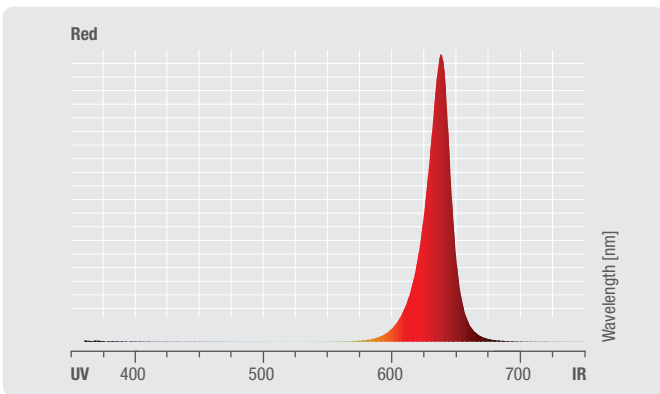
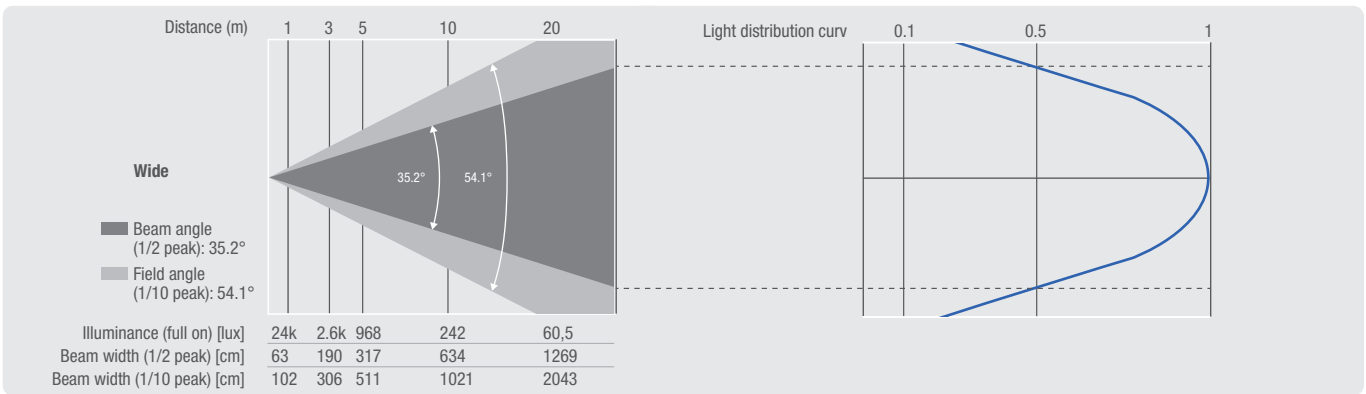
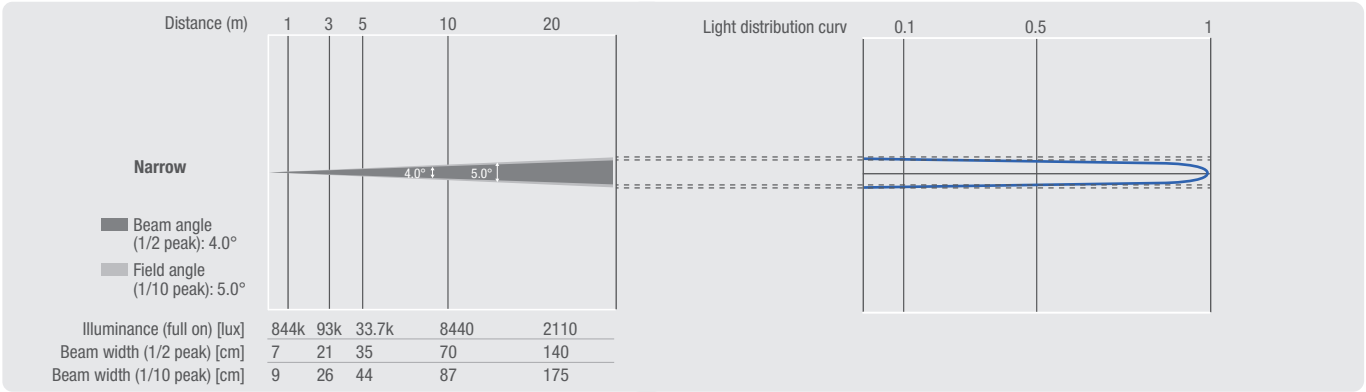


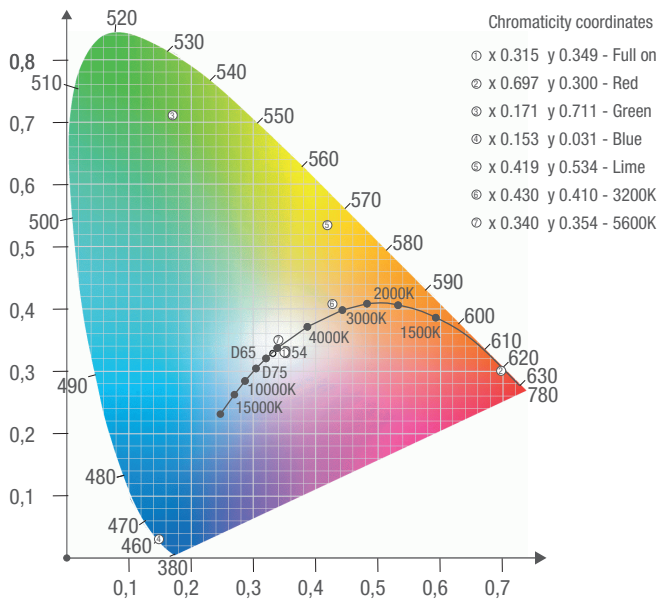
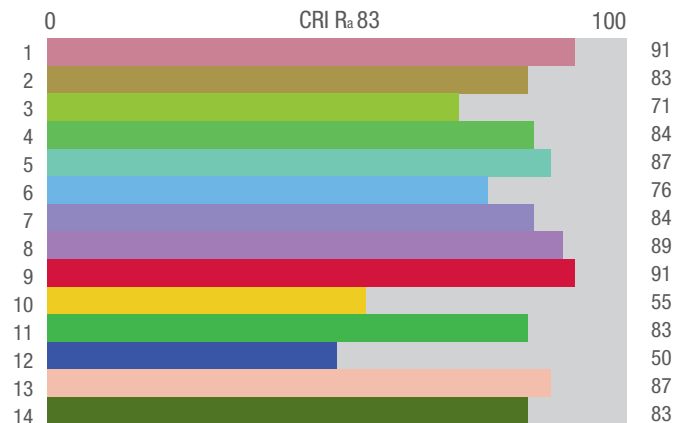
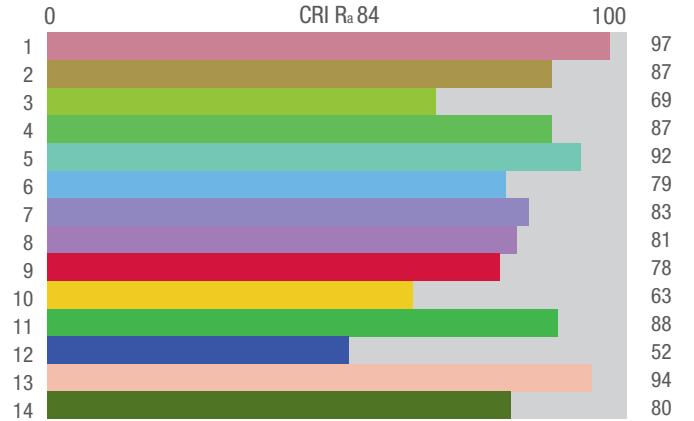
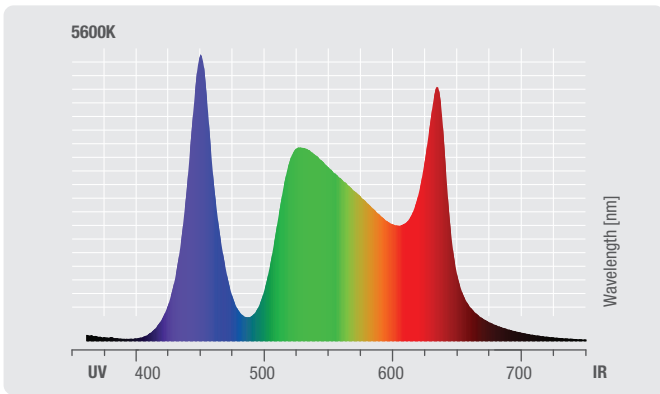
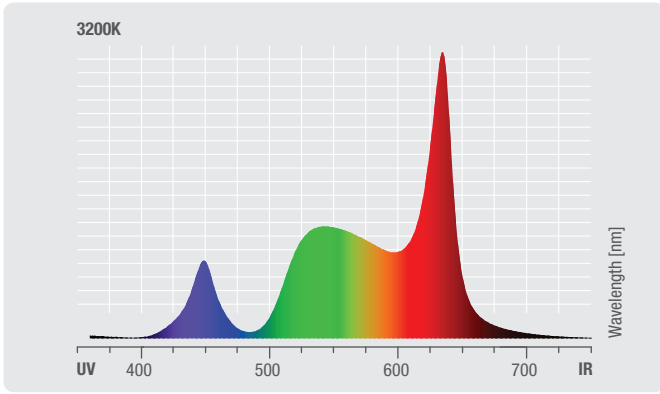
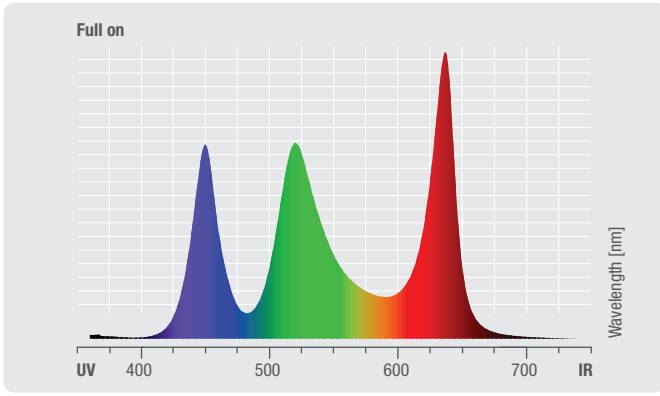
# Photometric Measurements

Photometrische Messungen | Mesures Photométriques  
 Mediciones Fotométricas

## OTOS<sup>®</sup> W6 (CLOTOSW6)

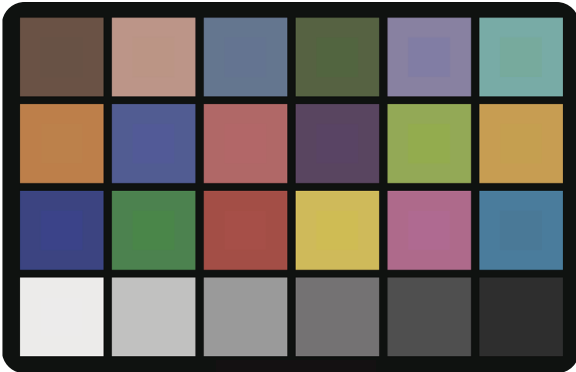
	Luminous flux	Chromaticity coordinates	CCT	R <sub>a</sub>
<b>Full on</b>	7015 lm	x 0.315 y 0.349	1.8K - 8.2K	84
<b>Red</b> (calibrated)	1260 lm	x 0.697 y 0.300	-	-
<b>Green</b> (calibrated)	3692 lm	x 0.171 y 0.711	-	-
<b>Blue</b> (calibrated)	636 lm	x 0.153 y 0.031	-	-
<b>Lime</b> (calibrated)	5124 lm	x 0.419 y 0.534	-	-
<b>3200K</b> (calibrated)	6130 lm	x 0.430 y 0.410	-	84
<b>5600K</b> (calibrated)	6570 lm	x 0.340 y 0.354	-	83



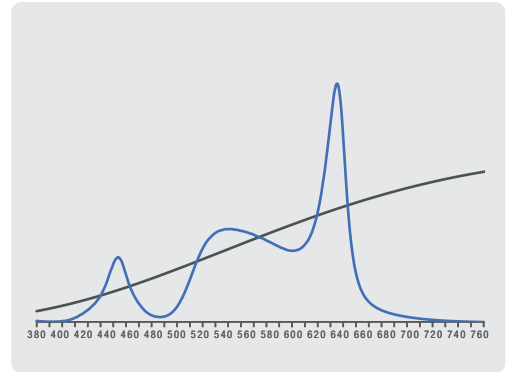


**3200K  
Television Lighting  
Consistency Index-2012**

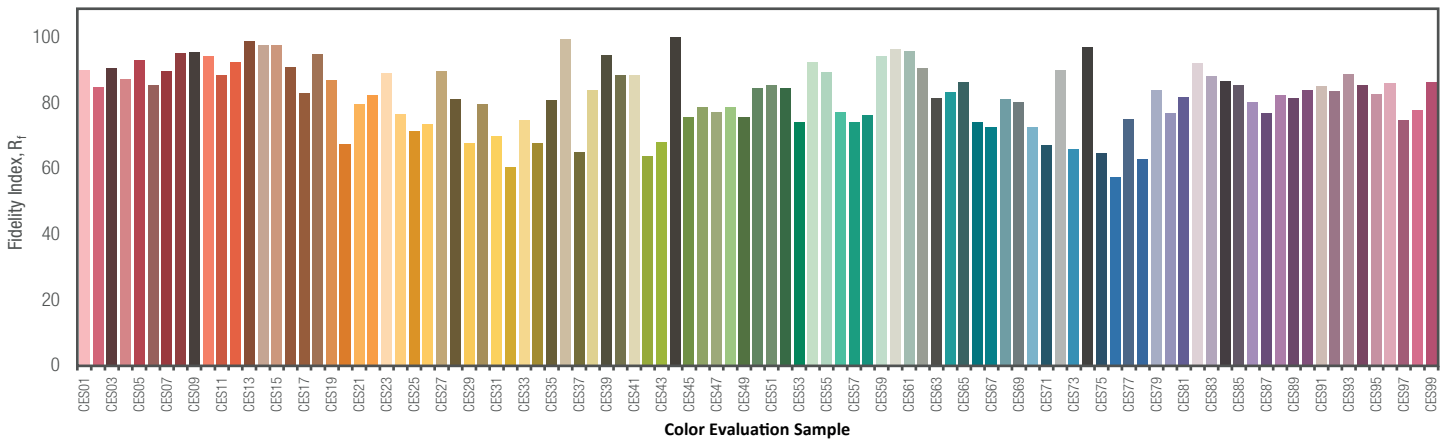
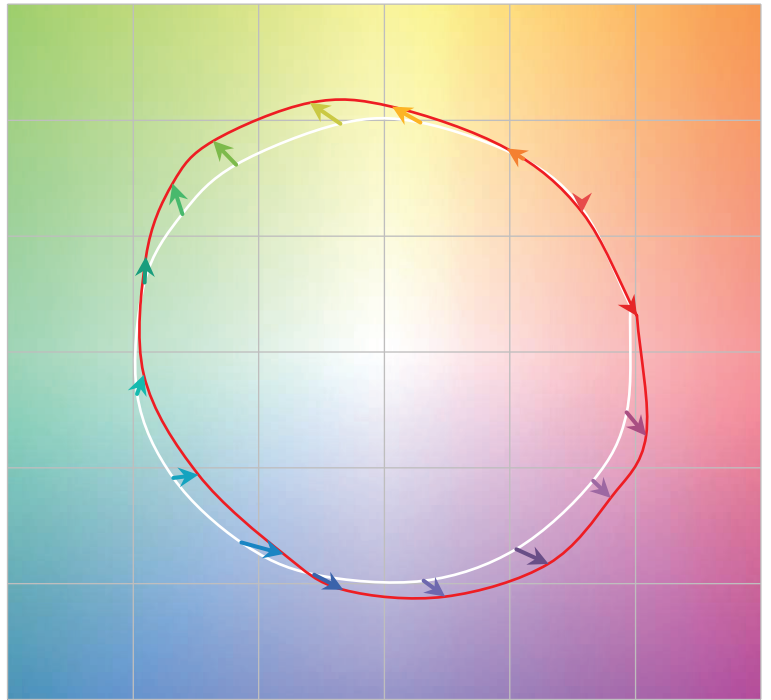
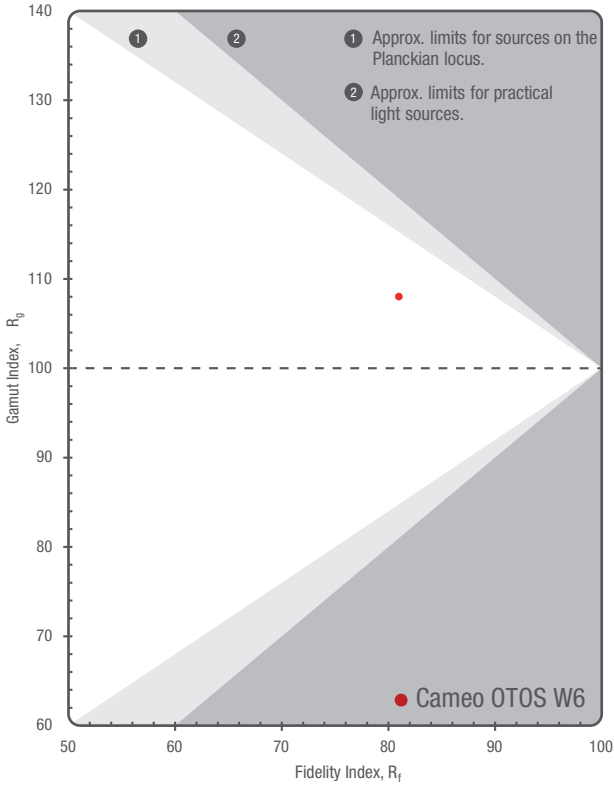
CCT = P3145 (+0.6)  
TLCI-2012: 71 (P3145)



Sector	Lightness	Chroma	Hue
R	0	0	0
R/Y	0	0	--
Y	-	--	--
Y/G	-	---	0
G	-	---	0
G/C	+	--	++++
C	++	0	+++
C/B	+++	+	0
B	0	---	---
B/M	++	---	++
M	0	---	+++
M/R	0	--	+++

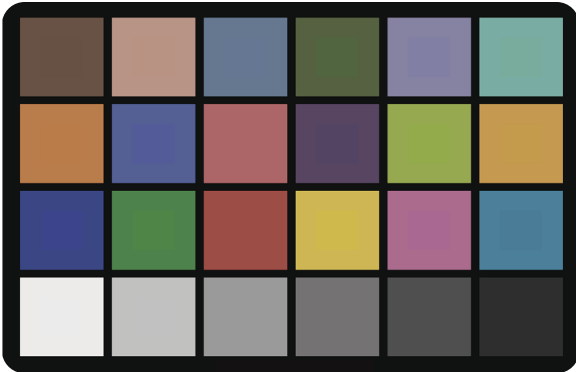


**TM-30-15** R<sub>f</sub> 81  
R<sub>g</sub> 108

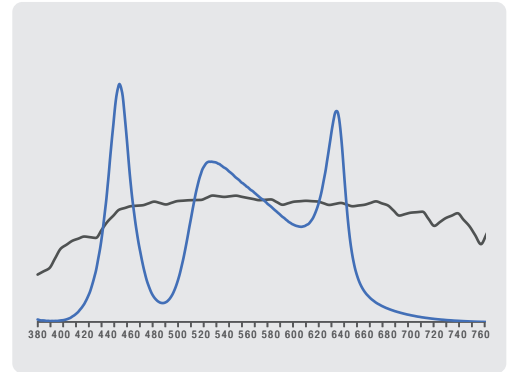


**5600K  
Television Lighting  
Consistency Index-2012**

CCT = D5194 (+0.0)  
TLCI-2012: 76 (D5194)



Sector	Lightness	Chroma	Hue
R	0	0	0
R/Y	0	0	--
Y	-	--	---
Y/G	-	---	0
G	-	--	0
G/C	0	-	++++
C	+	0	+
C/B	++	0	-
B	0	---	---
B/M	+	--	+
M	+	--	++
M/R	0	-	+++



**TM-30-15** R<sub>f</sub> 80  
R<sub>g</sub> 104

