



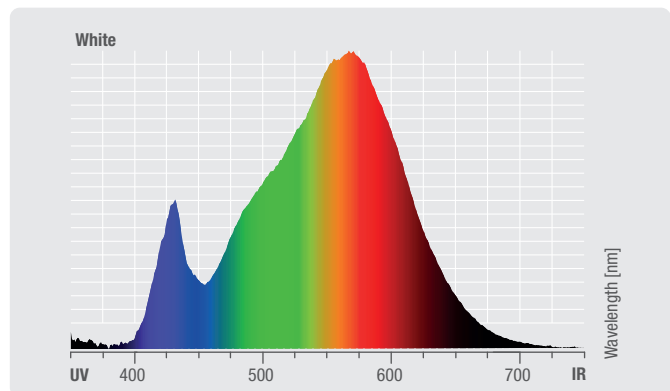
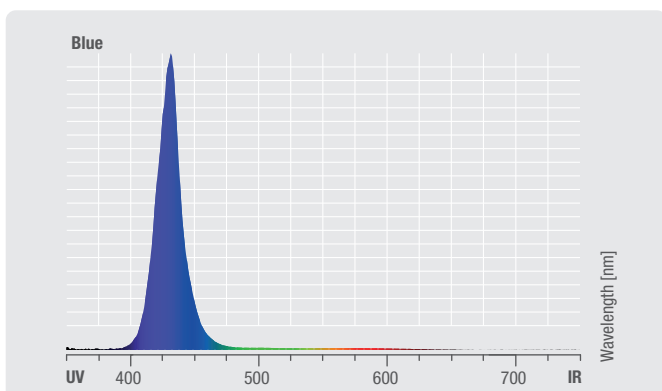
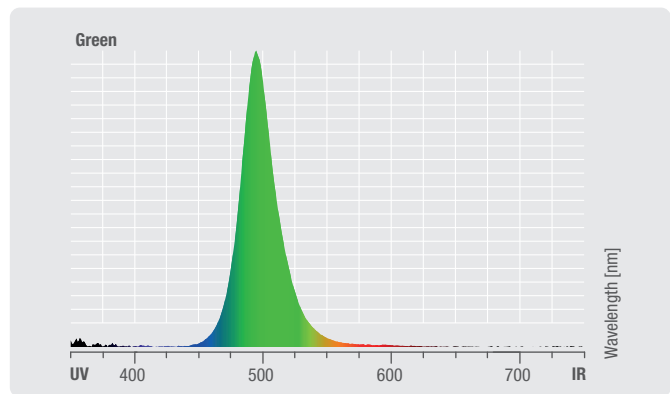
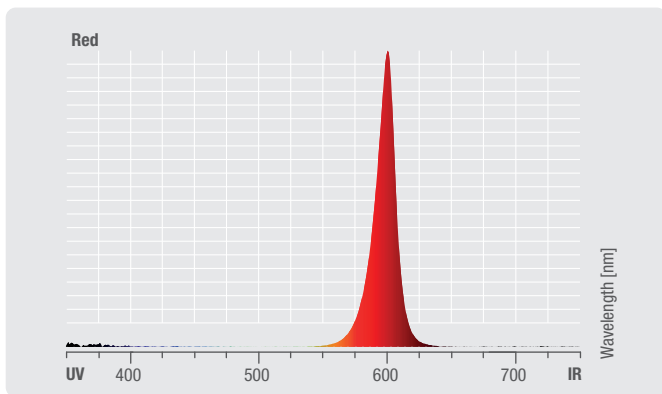
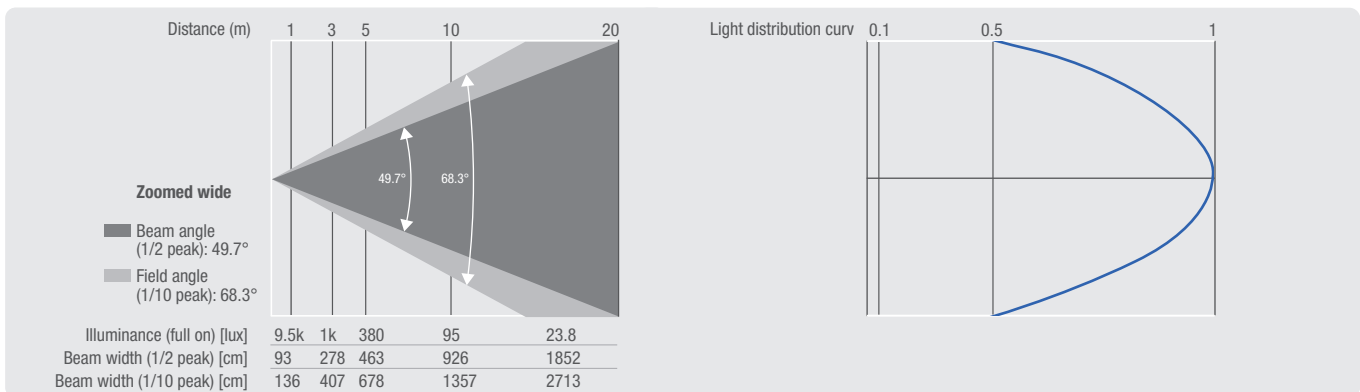
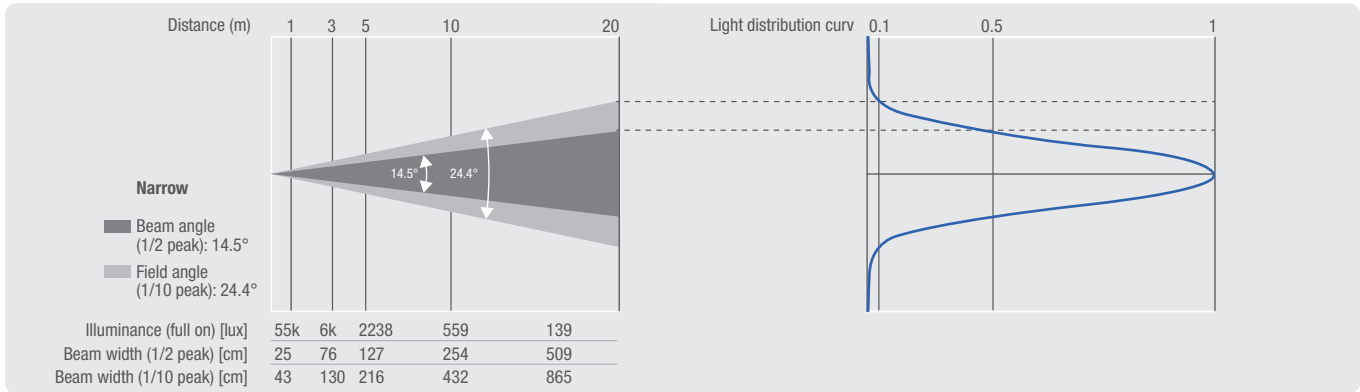
Photometric Measurements

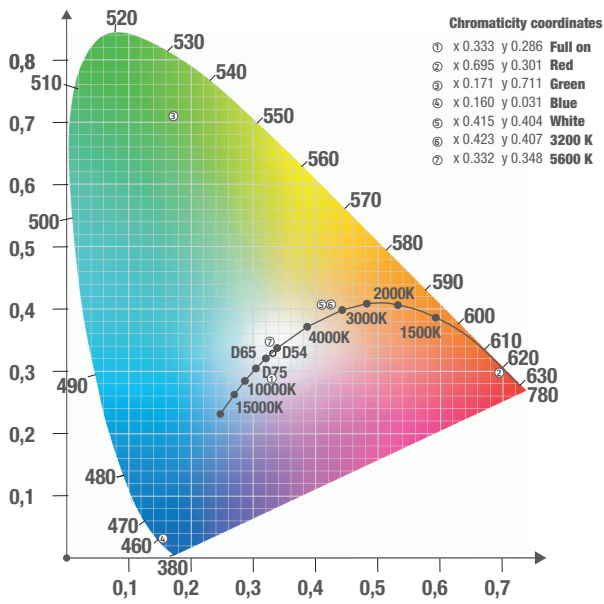
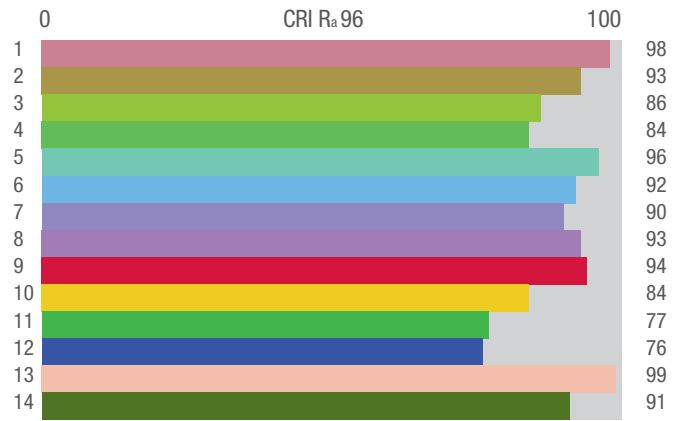
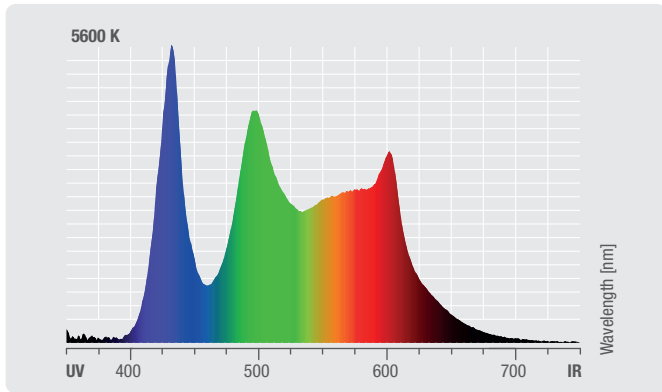
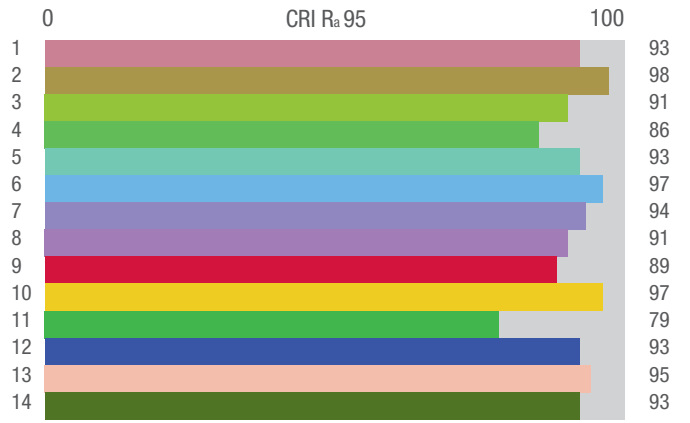
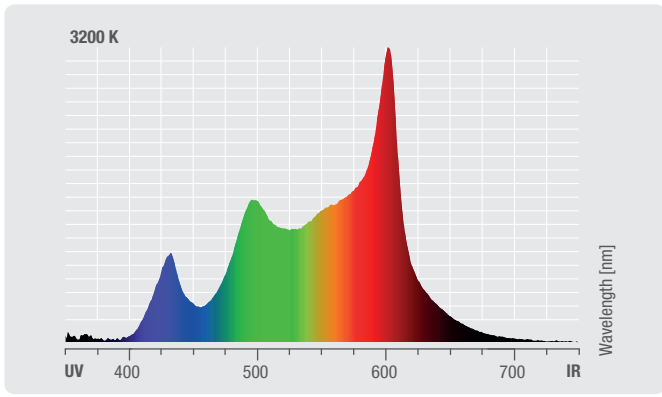
Photometrische Messungen | Mesures Photométriques
Mediciones Fotométricas

F4 FC PO IP (CLF4FCPOIP)

| | Luminous flux narrow calibrated | Chromaticity coordinates calibrated |
|---------|------------------------------------|--|
| Full on | 9200 lm | x 0.333 y 0.286 |
| Red | 1900 lm | x 0.695 y 0.301 |
| Green | 3600 lm | x 0.171 y 0.711 |
| Blue | 500 lm | x 0.160 y 0.031 |
| White | 8500 lm | x 0.415 y 0.404 |
| 3200 K | 10700 lm | x 0.423 y 0.407 |
| 5600 K | 10700 lm | x 0.332 y 0.348 |

| CCT | R _a | CRI |
|-------------|----------------|-----|
| 3200 - 5600 | | 95 |

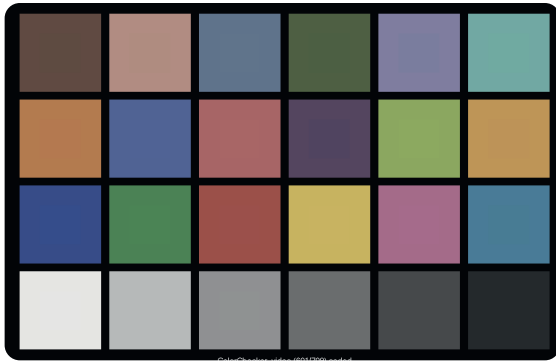




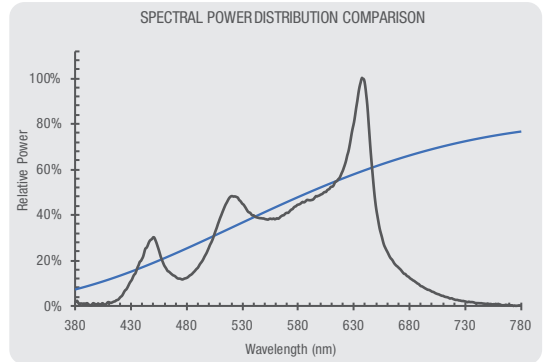
3200 K

Television Lighting Consistency Index-2012

CCT = P3254 (+0.6)
 TLCI-2012: 93 (P3254)

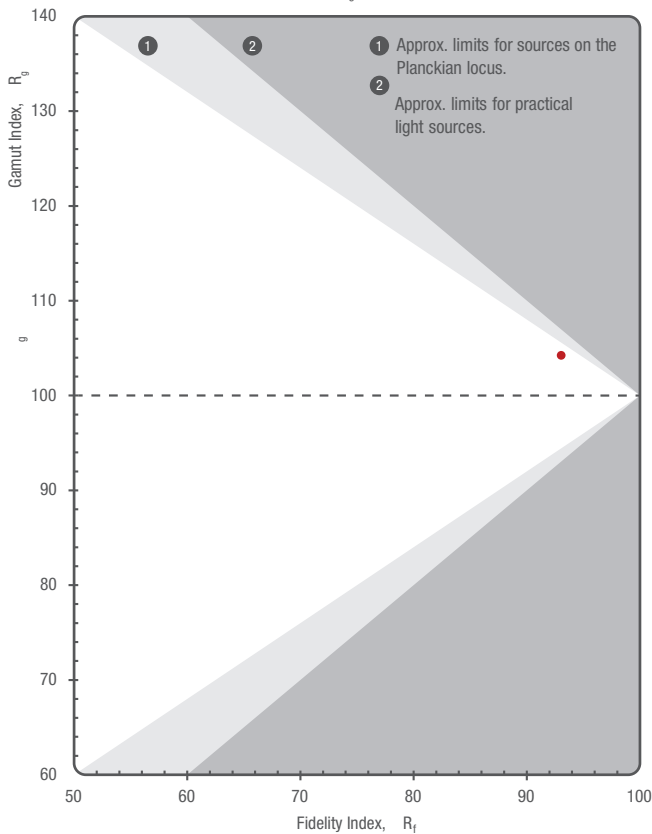


| Sector | Lightness | Chroma | Hue |
|--------|-----------|--------|-----|
| R | 0 | 0 | 0 |
| R/Y | + | 0 | + |
| Y | 0 | 0 | 0 |
| Y/G | 0 | 0 | 0 |
| G | 0 | 0 | 0 |
| G/C | 0 | - | + |
| C | 0 | - | +++ |
| C/B | 0 | 0 | +++ |
| B | 0 | 0 | 0 |
| B/M | + | 0 | +++ |
| M | 0 | 0 | ++ |
| M/R | 0 | 0 | + |

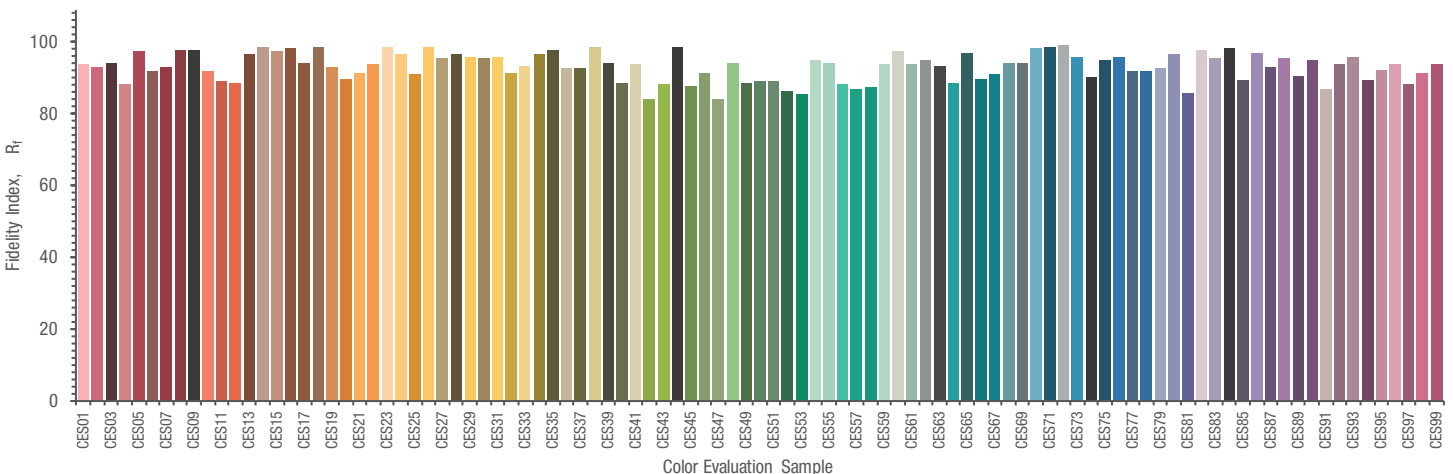
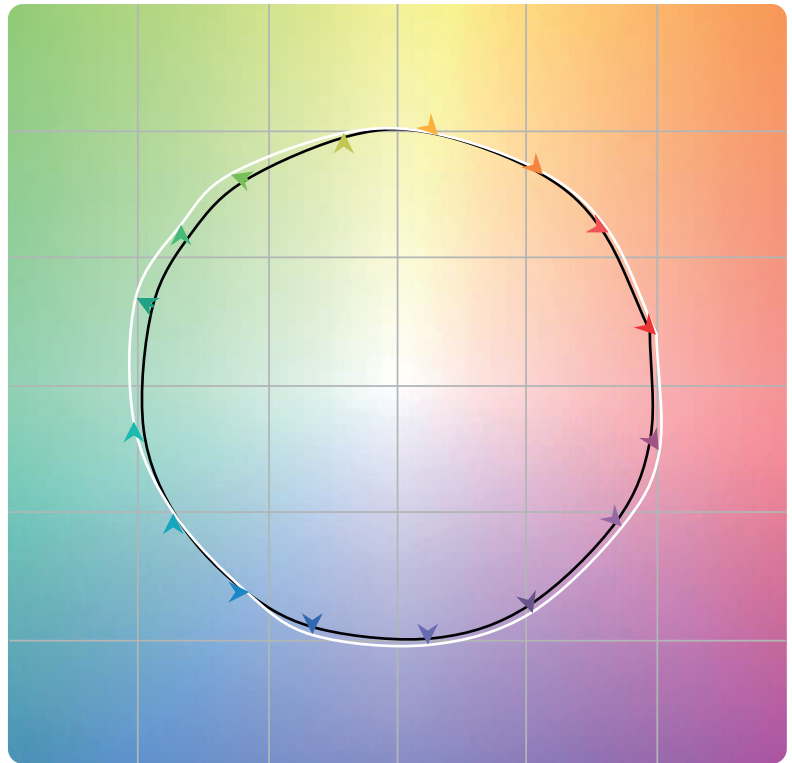


TM-30-15

R_f-R_g Plot



● Cameo F4 FC PO IP

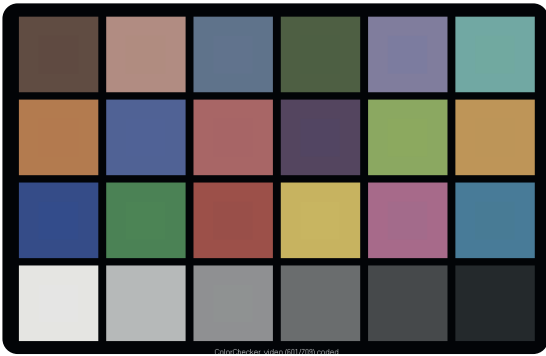


5600 K

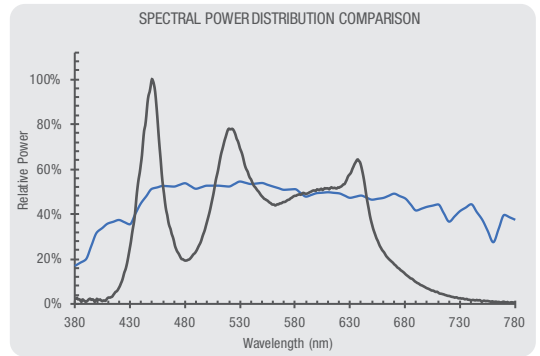
Television Lighting Consistency Index-2012

CCT = D5503 (+0.1)

TLCI-2012: 87 (D5503)

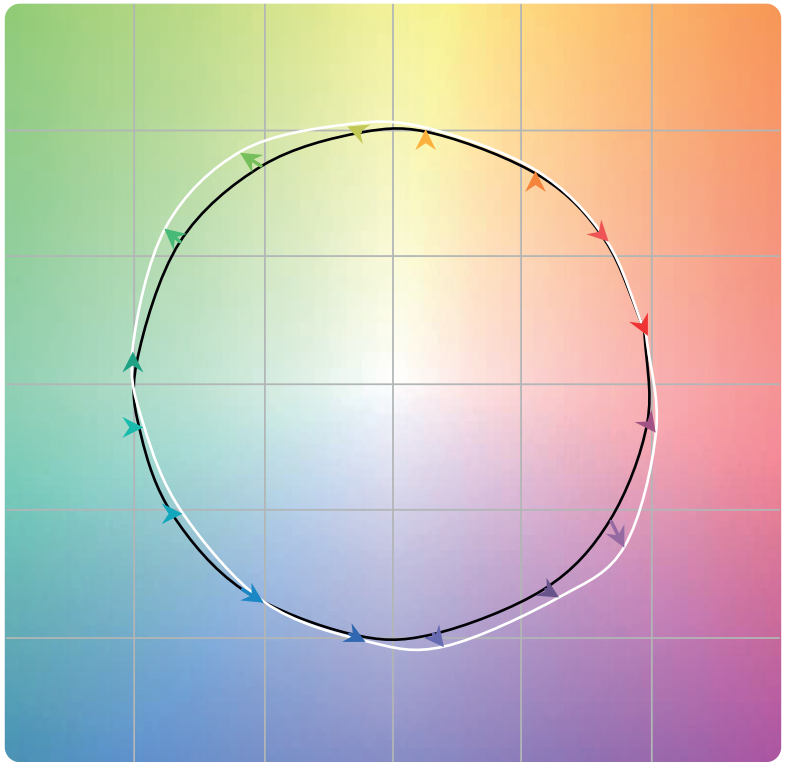
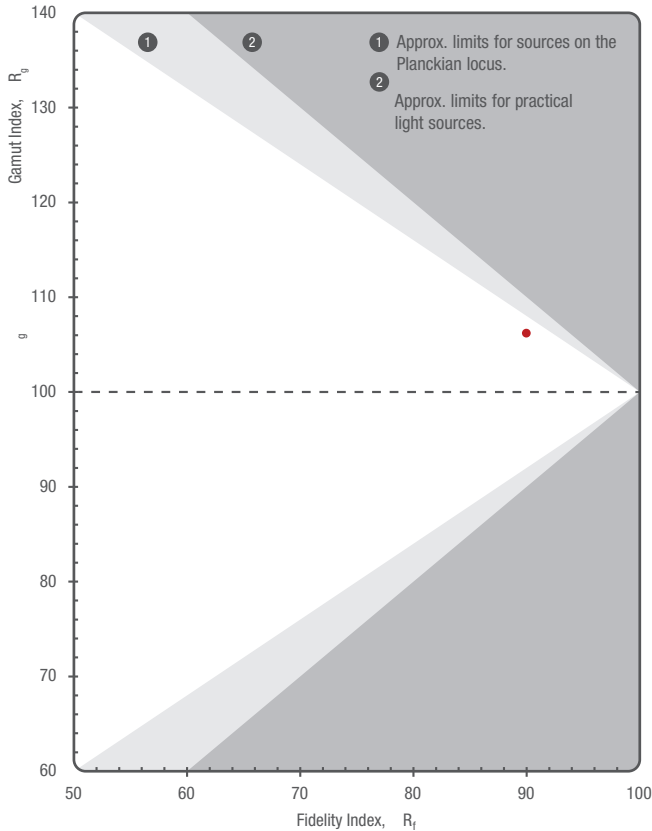


| Sector | Lightness | Chroma | Hue |
|--------|-----------|--------|------|
| R | 0 | 0 | 0 |
| R/Y | 0 | 0 | 0 |
| Y | 0 | 0 | 0 |
| Y/G | 0 | - | 0 |
| G | - | - | 0 |
| G/C | 0 | -- | ++++ |
| C | 0 | 0 | +++ |
| C/B | 0 | 0 | +++ |
| B | 0 | - | 0 |
| B/M | 0 | - | ++ |
| M | 0 | - | ++ |
| M/R | 0 | 0 | ++ |



TM-30-15

R_f-R_g Plot



● Cameo F4 FC PO IP

