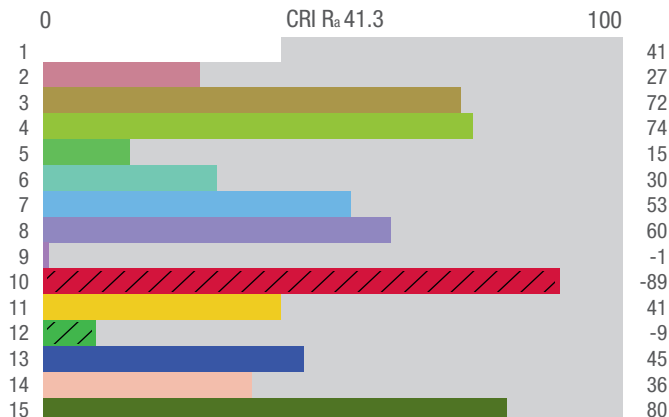
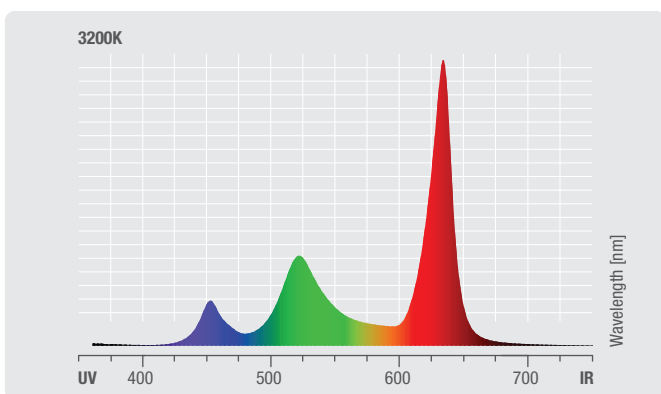
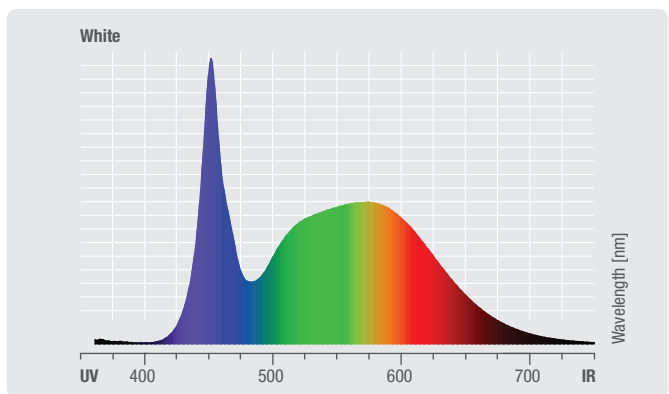
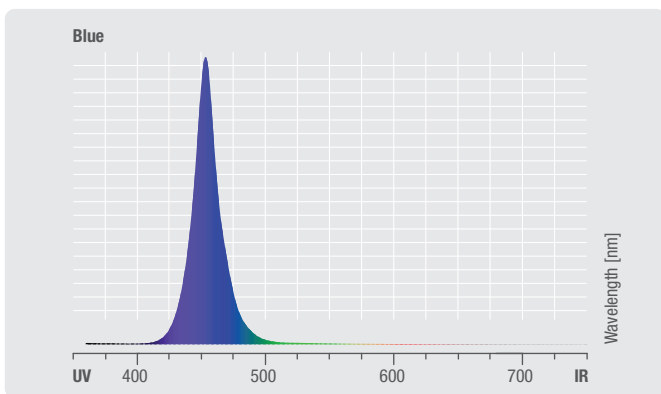
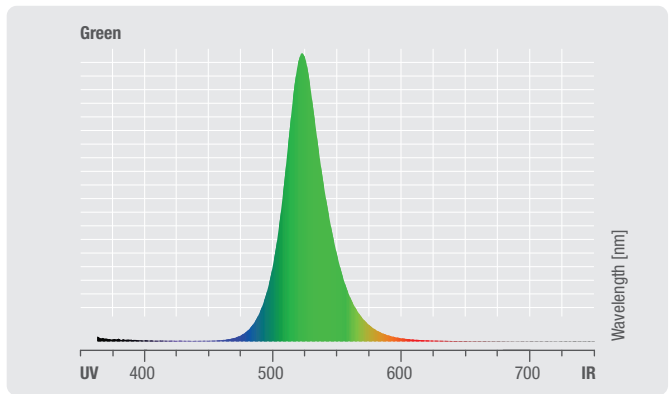
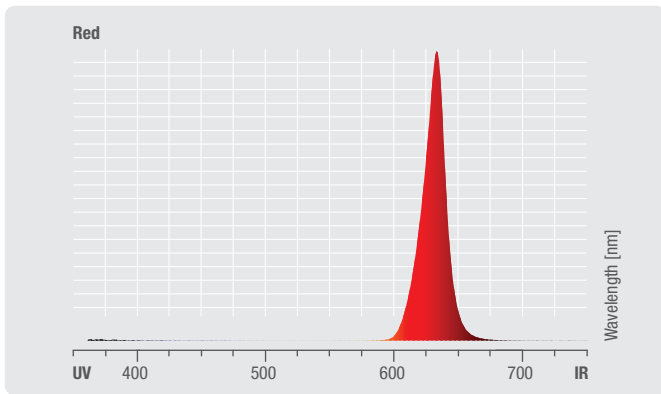
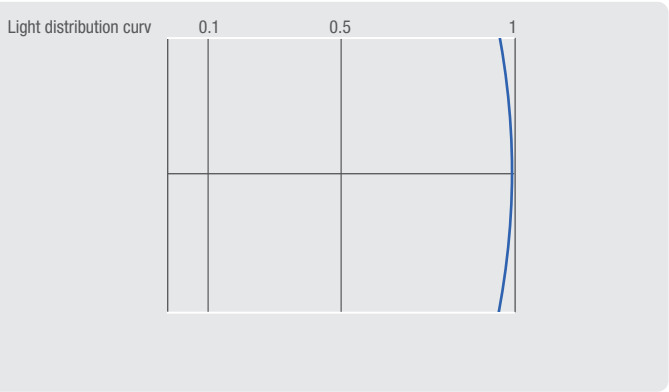
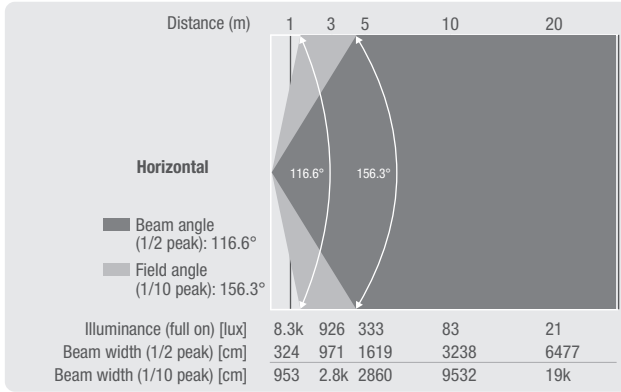


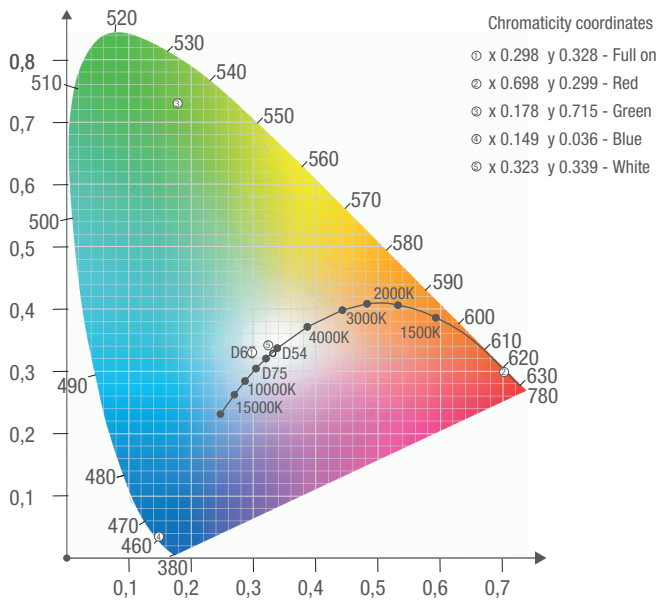
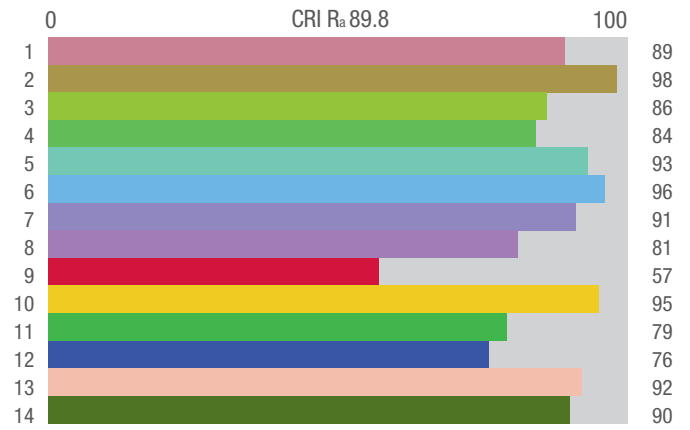
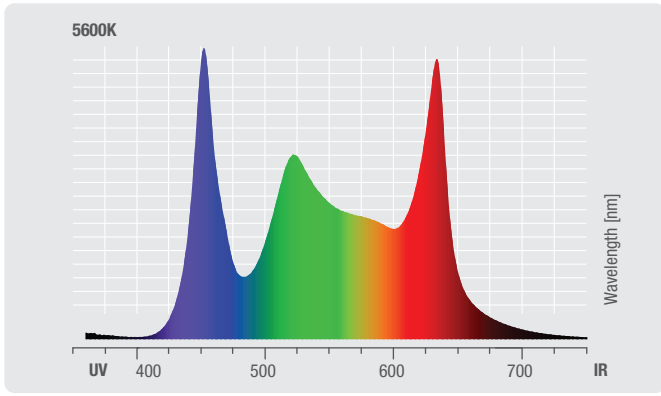
Photometric Measurements

Photometrische Messungen | Mesures Photométriques
Mediciones Fotométricas

ZENIT® W300 SMD (CLZW300SMD)

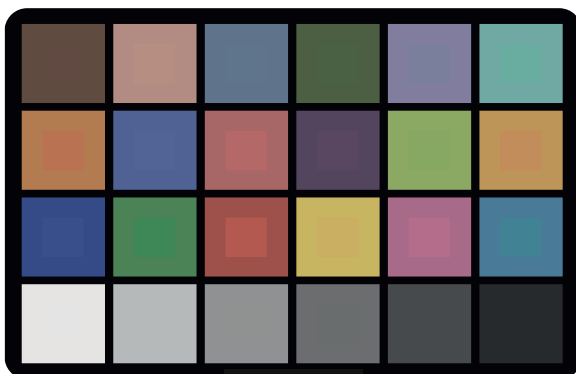
	Luminous flux	Chromaticity coordinates	CCT	R _a
Full on	15848 lm	x 0.298 y 0.328	2.7K - 6.5K	94
Red (calibrated)	2725 lm	x 0.683 y 0.297	-	-
Green (calibrated)	6583 lm	x 0.210 y 0.660	-	-
Blue (calibrated)	1614 lm	x 0.152 y 0.046	-	-
White (calibrated)	16747 lm	x 0.299 y 0.328	-	-



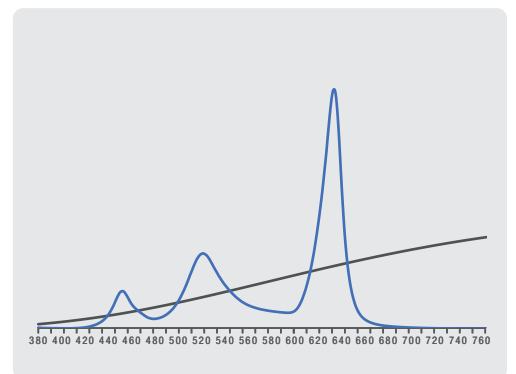


**3200K
Television Lighting
Consistency Index-2012**

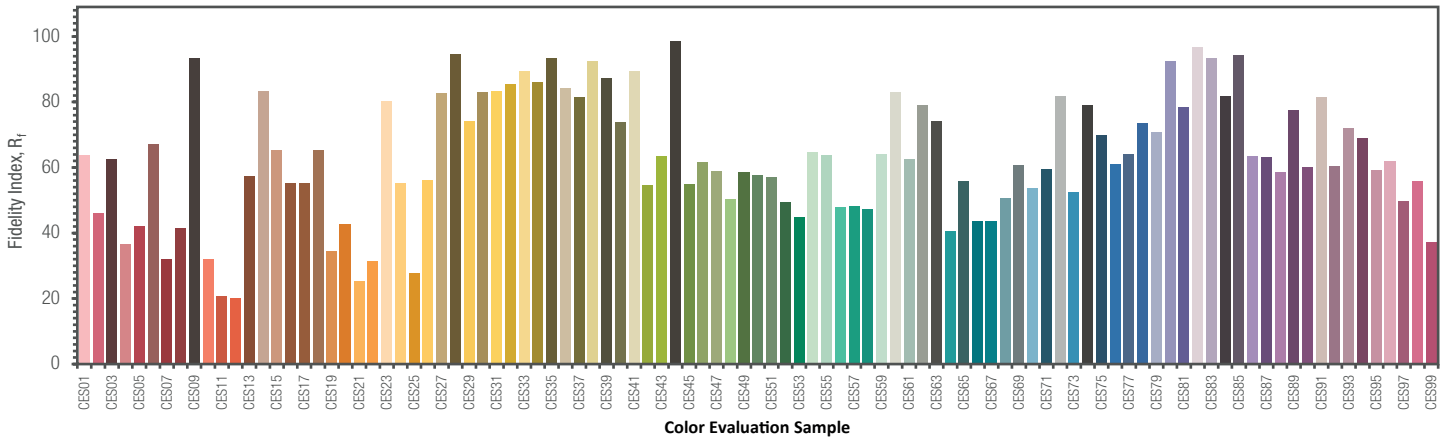
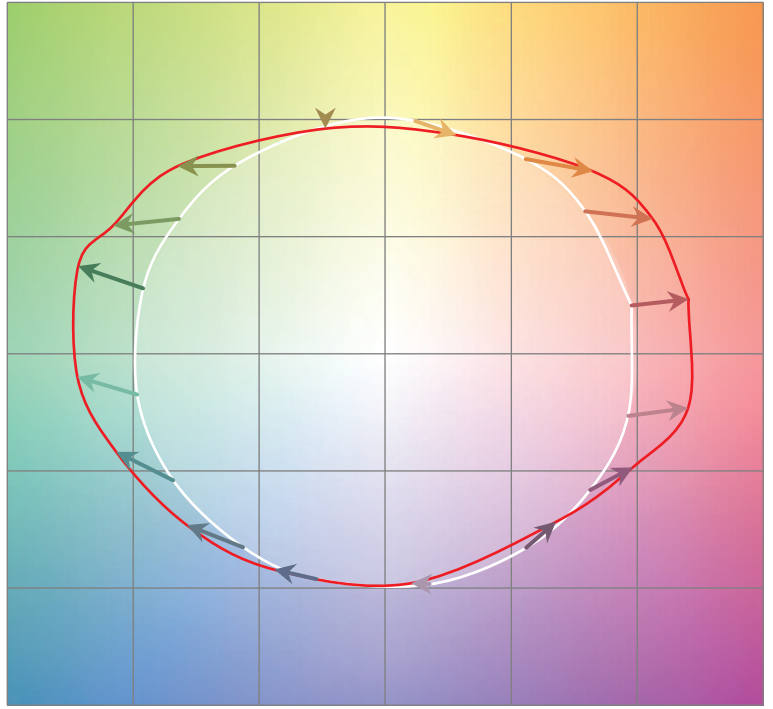
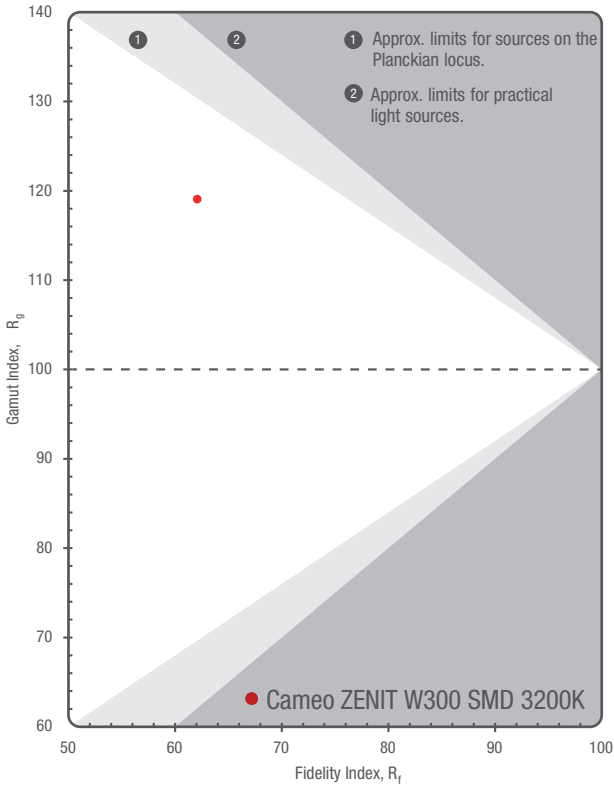
CCT = P2949 (-0.7)
TLCI-2012: 26 (P3086)



Sector	Lightness	Chroma	Hue
R	--	--	+++
R/Y	++++	0	++++
Y	++	+	++++
Y/G	0	0	--
G	0	-	--
G/C	0	----	+
C	-	----	++++
C/B	---	0	++++
B	-	0	+++
B/M	-	0	0
M	-	0	-
M/R	----	--	----

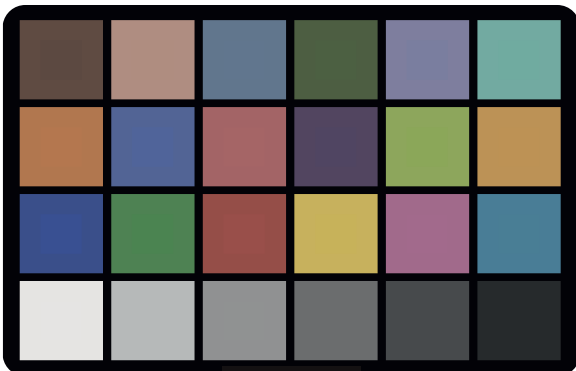


TM-30-15 R_r 62
R_g 119

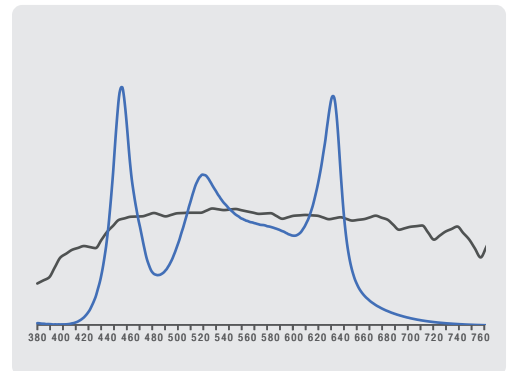


5600K Television Lighting Consistency Index-2012

CCT = D5277 (-0.8)
TLCI-2012: 92 (D5277)



Sector	Lightness	Chroma	Hue
R	-	0	0
R/Y	0	0	0
Y	0	0	0
Y/G	0	-	0
G	0	-	0
G/C	0	-	++
C	0	0	+
C/B	0	0	+
B	0	-	0
B/M	0	0	+
M	0	0	0
M/R	0	0	0



TM-30-15 R_r 90
 R_g 107

