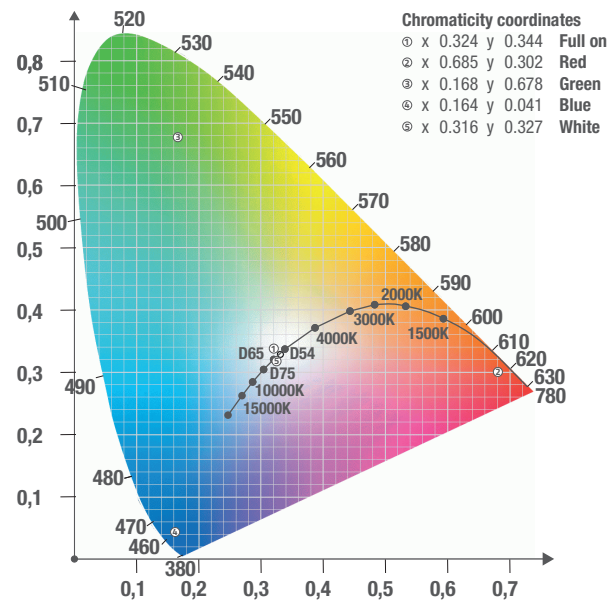
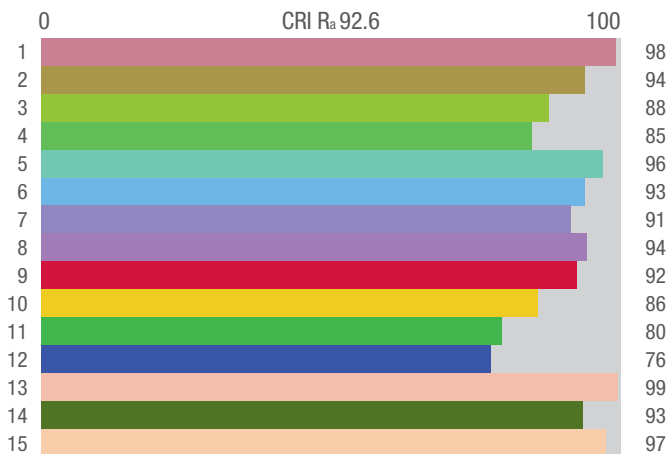
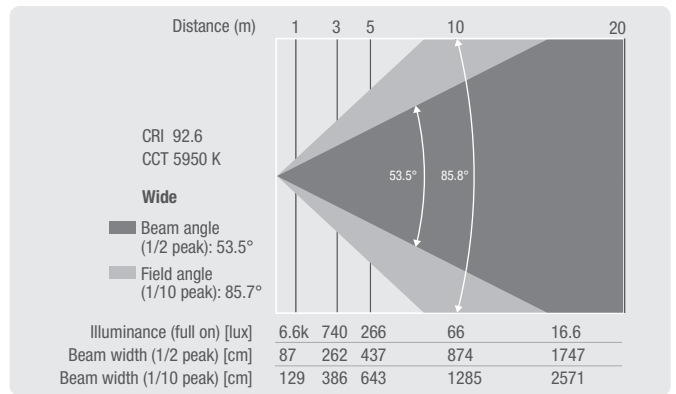
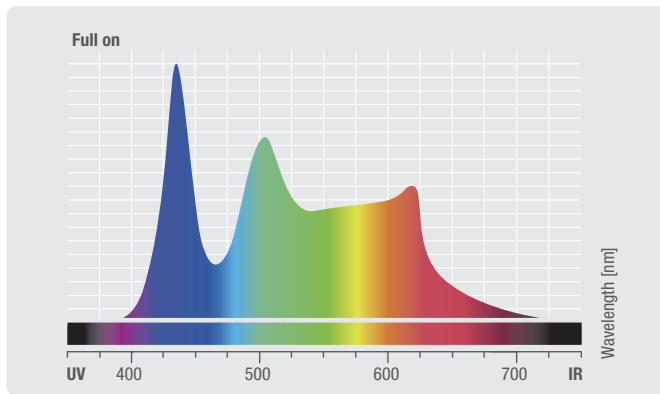
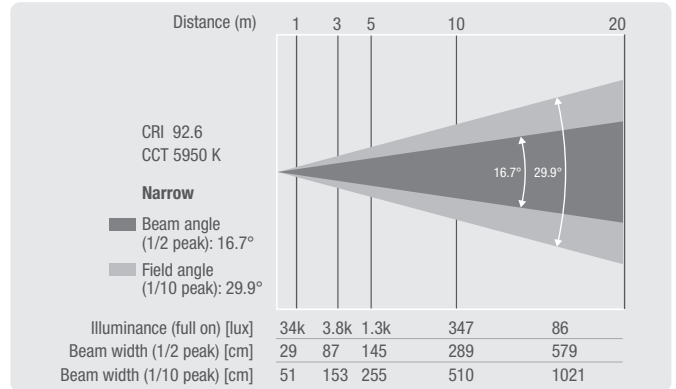


# Photometric Measurements

Photometrische Messungen | Mesures Photométriques  
Mediciones Fotométricas

## F2 FC (CLF2FC, CLF2FCIP, CLF2FCPO)

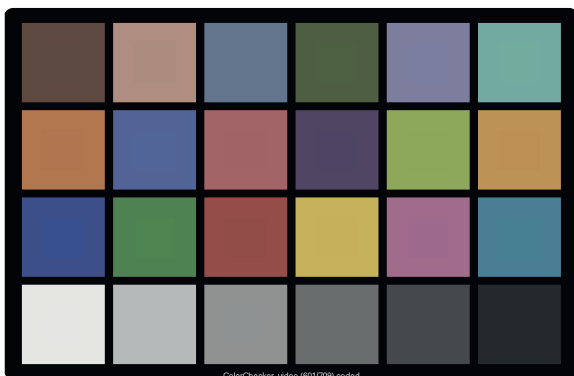
	Luminous flux	Chromaticity coordinates	CCT	R <sub>a</sub>
<b>Full on</b>	6857 lm	x 0.324 y 0.344	5949K	93
<b>Red</b>	1047 lm	x 0.685 y 0.302		
<b>Green</b>	1939 lm	x 0.168 y 0.678		
<b>Blue</b>	482 lm	x 0.164 y 0.678		
<b>White</b>	6822 lm	x 0.316 y 0.327		



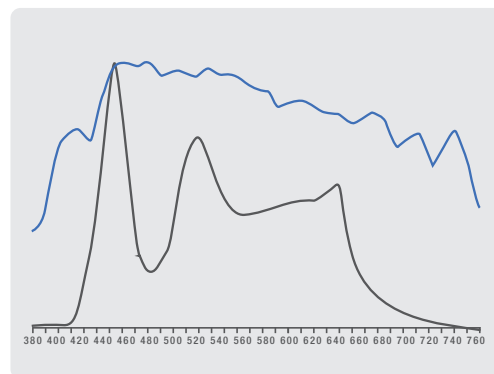
## Television Lighting Consistency Index-2012

CCT = D5949 (-0.1)

TLCI-2012: 89 (D5949)



Sector	Lightness	Chroma	Hue
R	0	0	0
R/Y	0	0	0
Y	0	0	0
Y/G	0	-	0
G	0	-	0
G/C	0	-	+++
C	0	0	+++
C/B	0	0	+++
B	0	-	0
B/M	0	-	++
M	0	0	++
M/R	0	0	++



## TM-30-15 R<sub>f</sub> 90 R<sub>g</sub> 105 R<sub>f</sub>-R<sub>g</sub> Plot

